

## **Item 9: IMM Report**

**Beth Garza**

**Director, ERCOT IMM**

bgarza@potomaceconomics.com

512-225-7077

**Board of Directors**

**October 13-14, 2014**

**ERCOT Public**

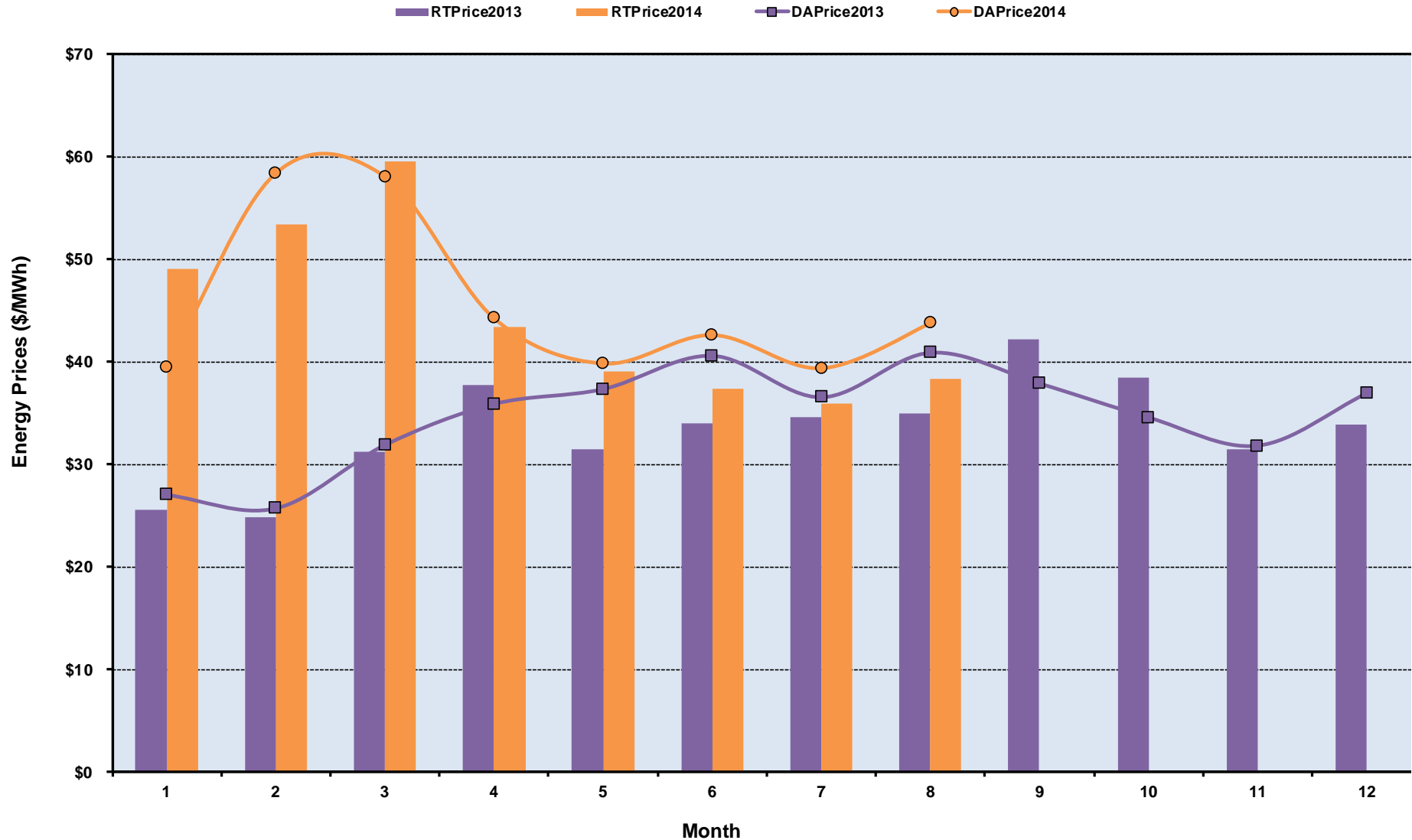
# Topics for Today

---

- **August monthly report highlights**
- **ORDC adder and Online Reserves**
- **2013 SOM Highlights**

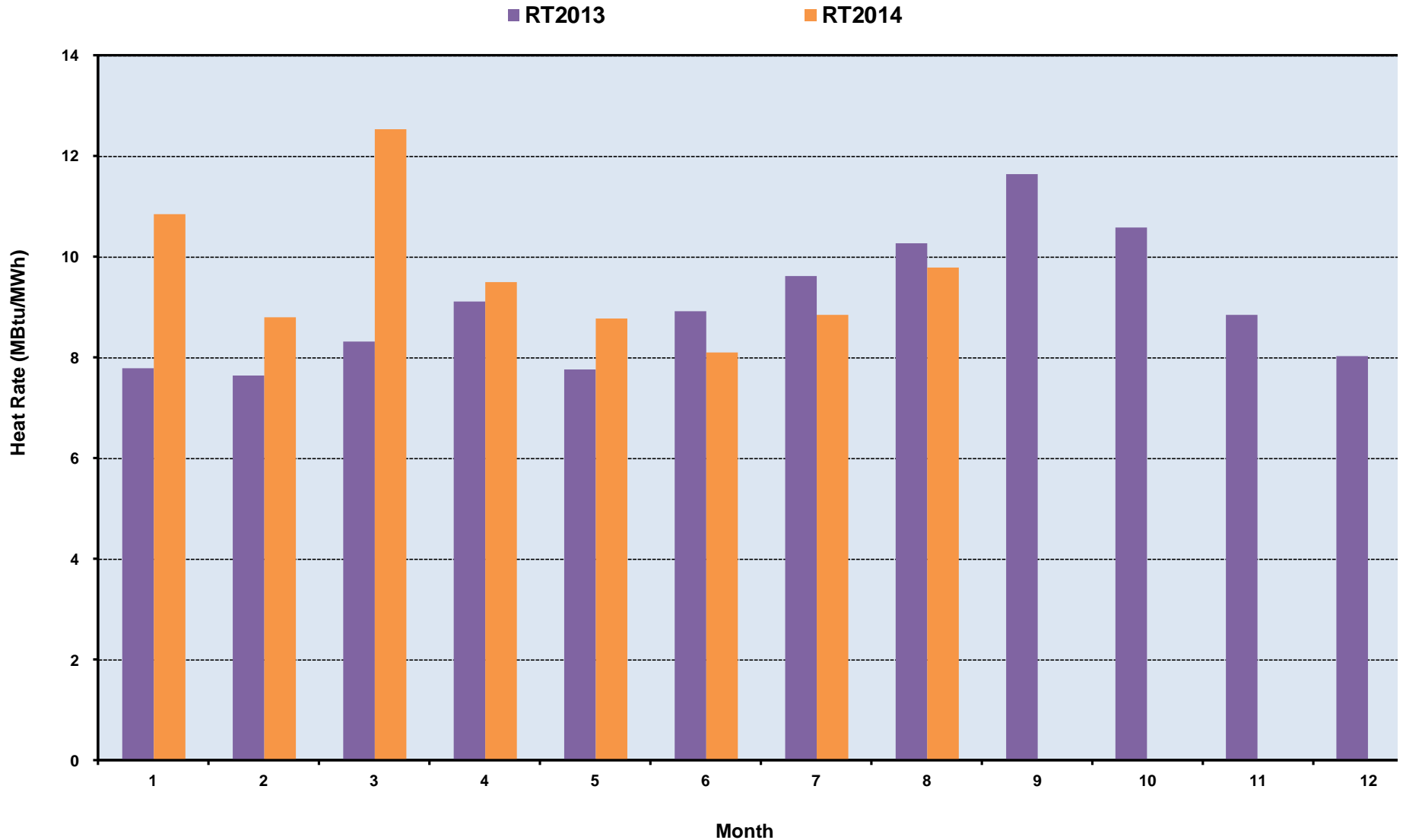
# ERCOT-Wide Average Energy Prices DA vs RT

(avg. DA & RT SPPs weighted by Real Time Settlement Loads)



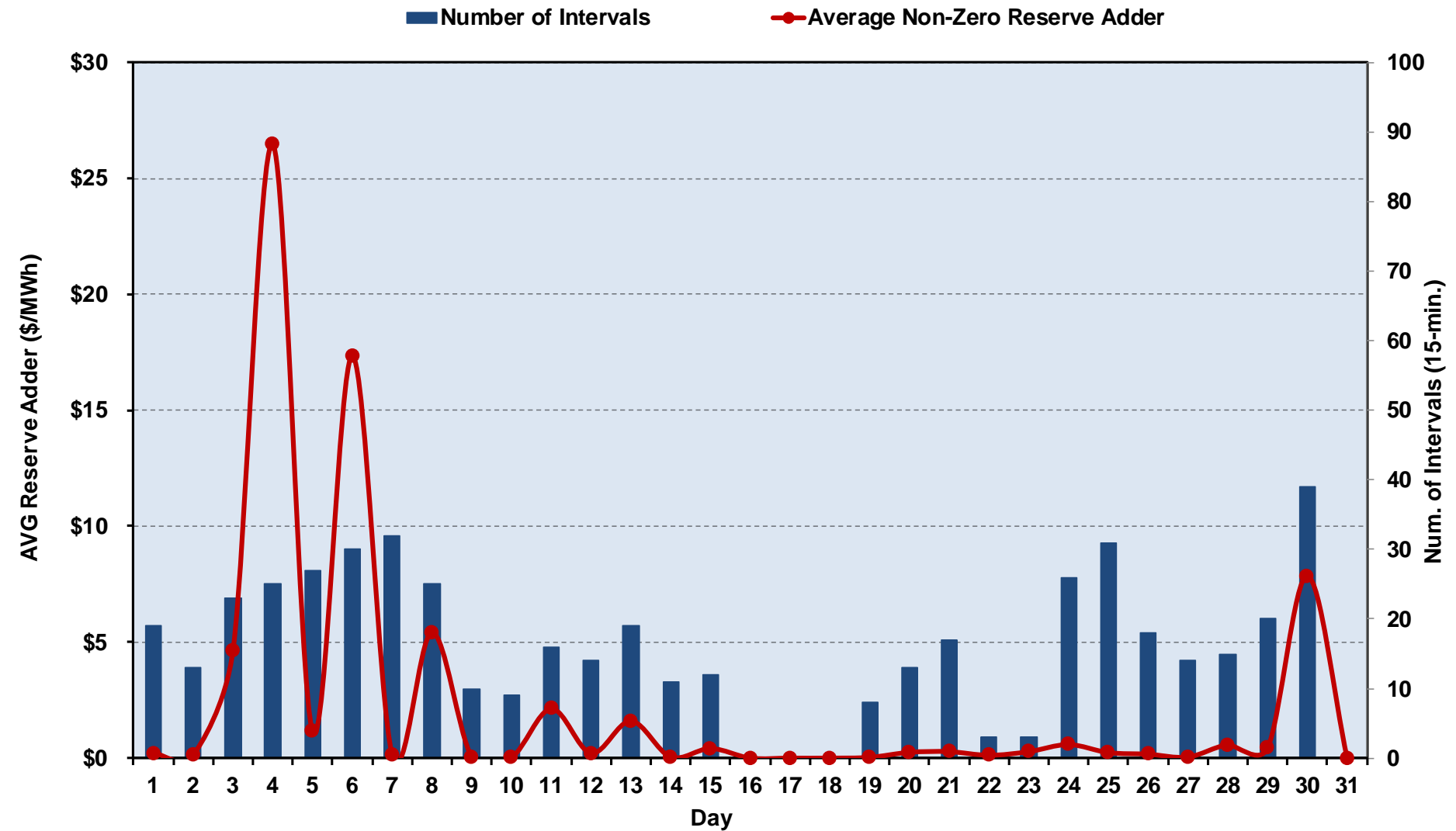
# ERCOT-Wide Monthly Implied Heat Rate DA vs RT

(avg. heat rates weighted by Real Time Settlement Loads)

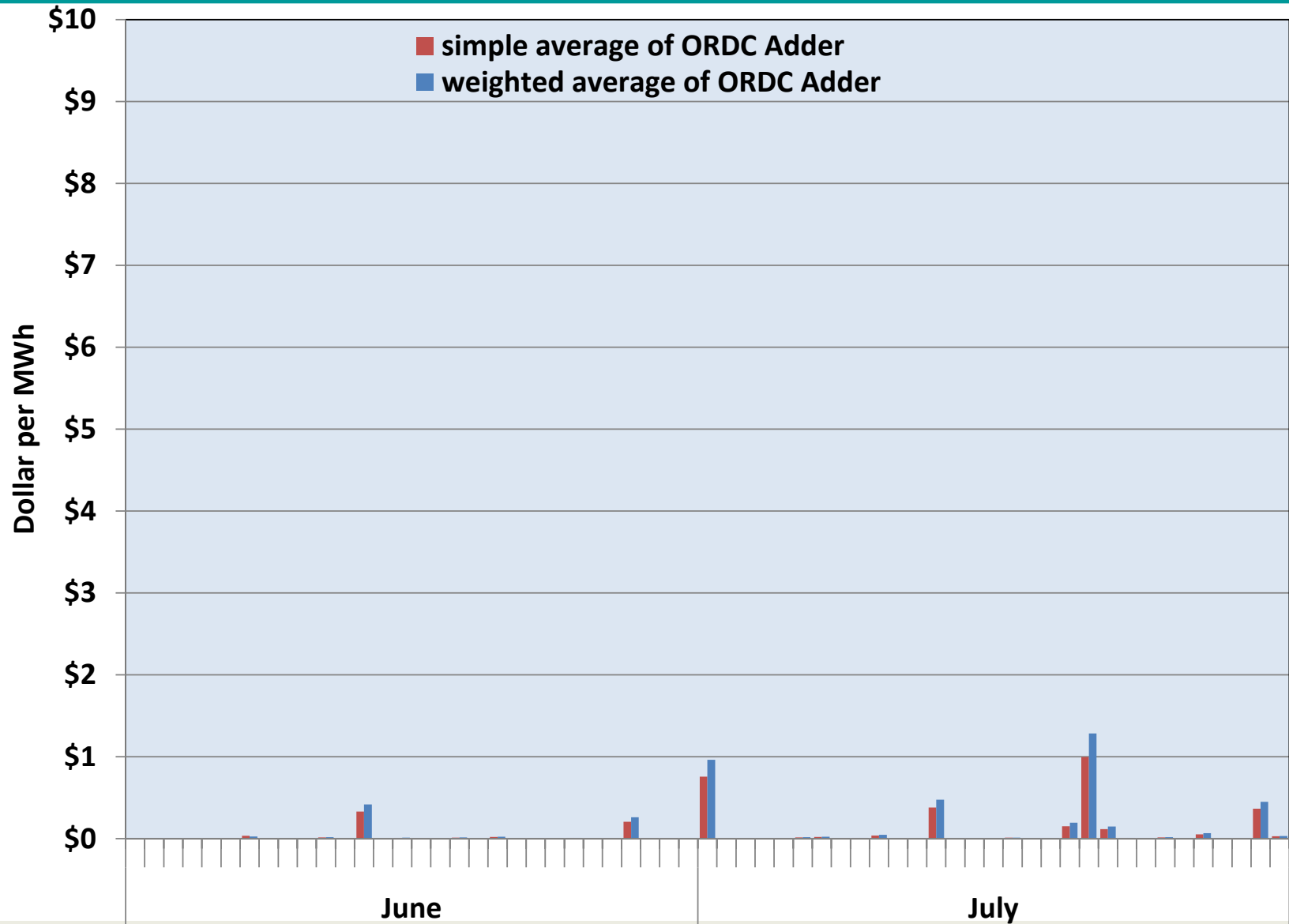


# Daily Average Reserve Adder Value and Duration

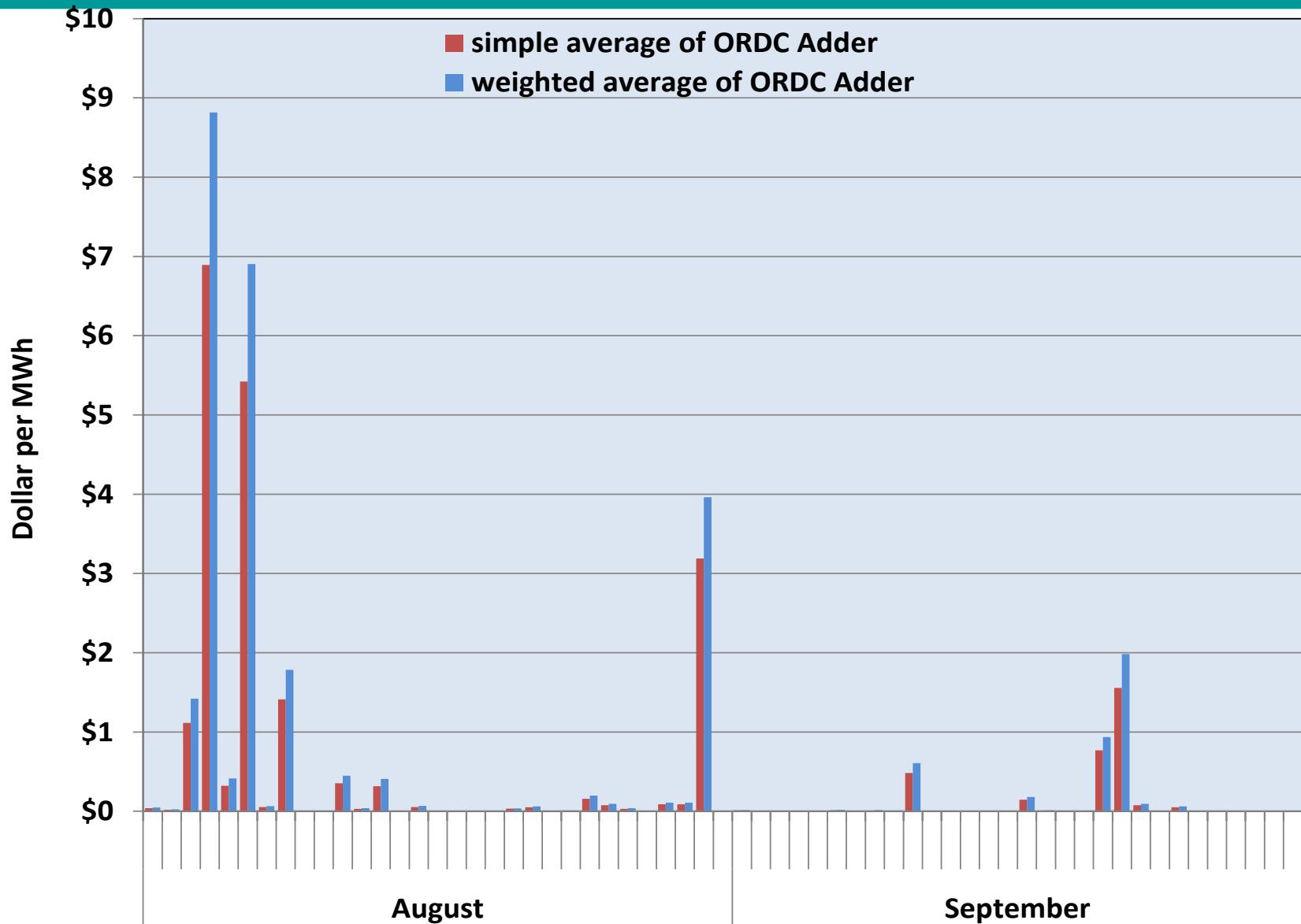
Aug-2014



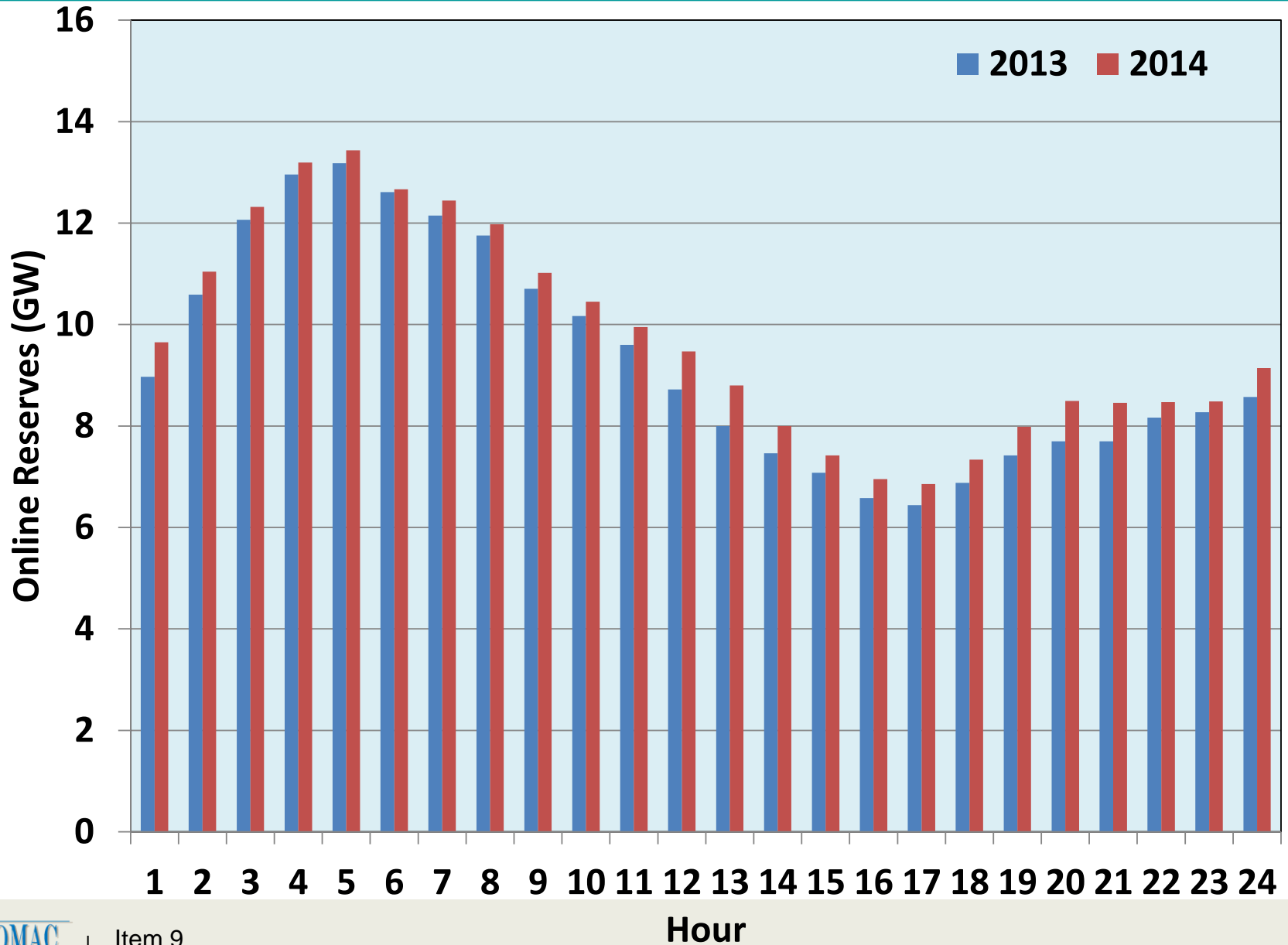
# Daily ORDC Adder – June and July



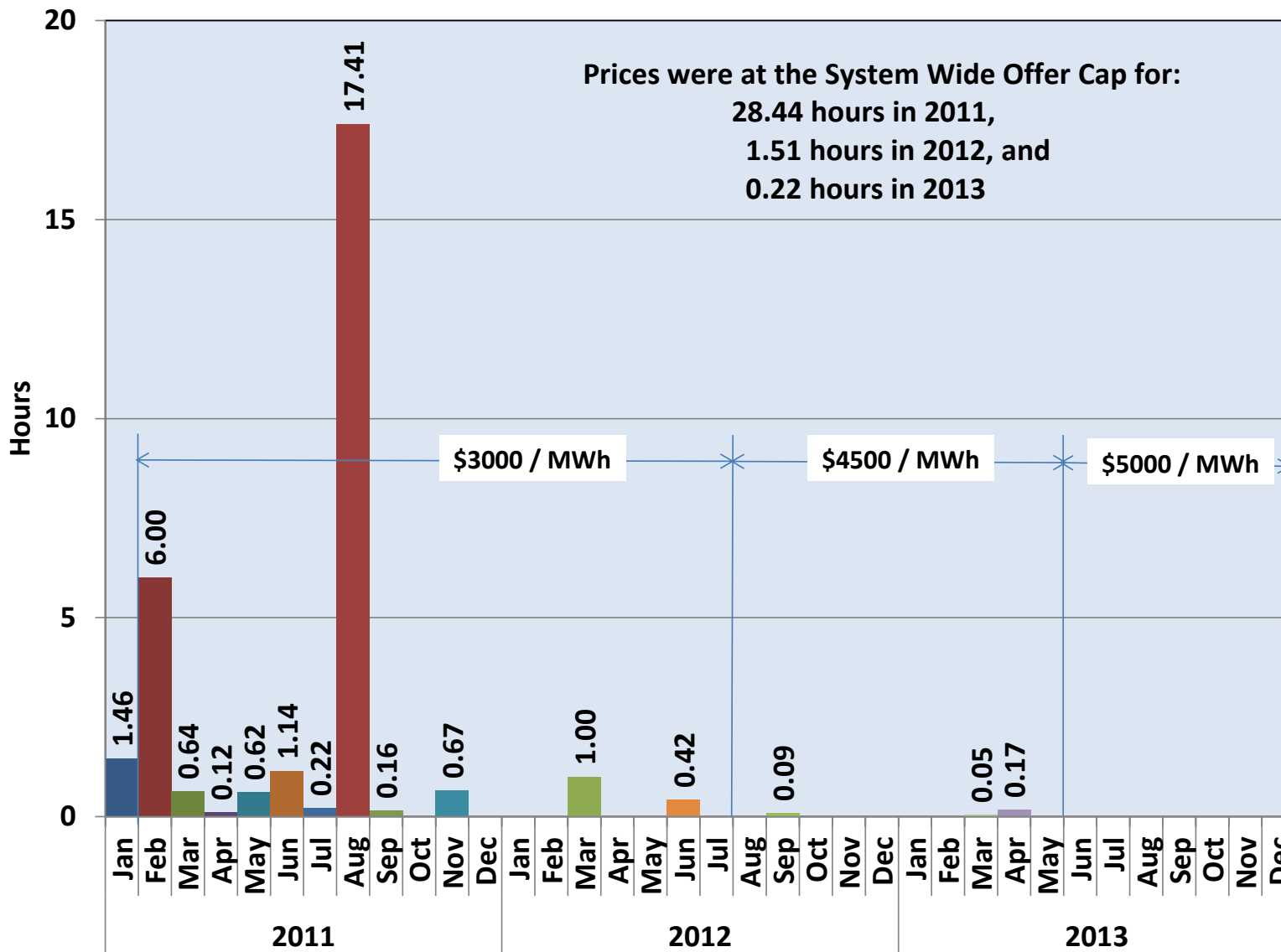
# Daily ORDC Adder – August and September



# Online Reserves

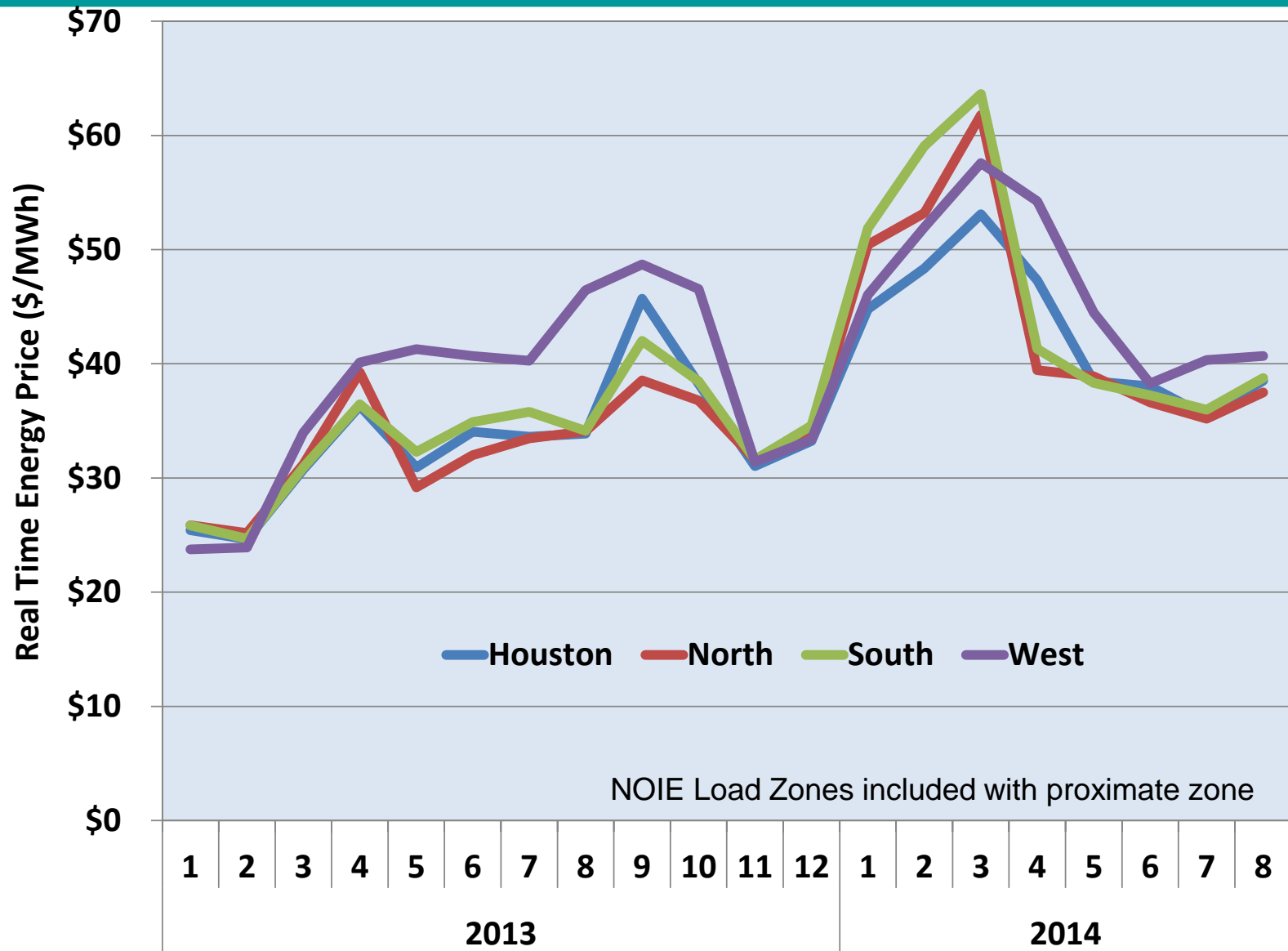




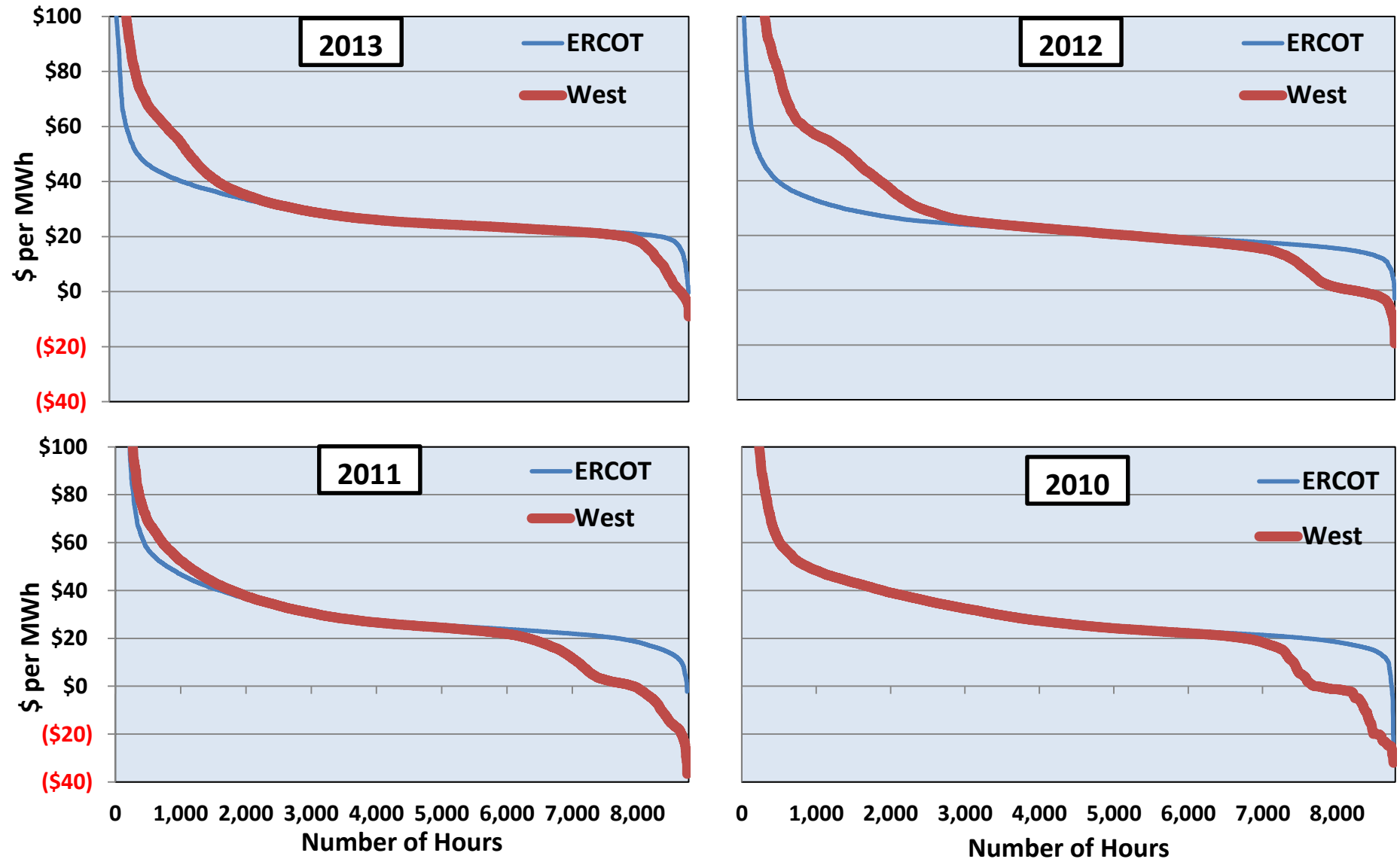


**2014 Hours**  
 Jan: 1.22  
 Mar: 0.33

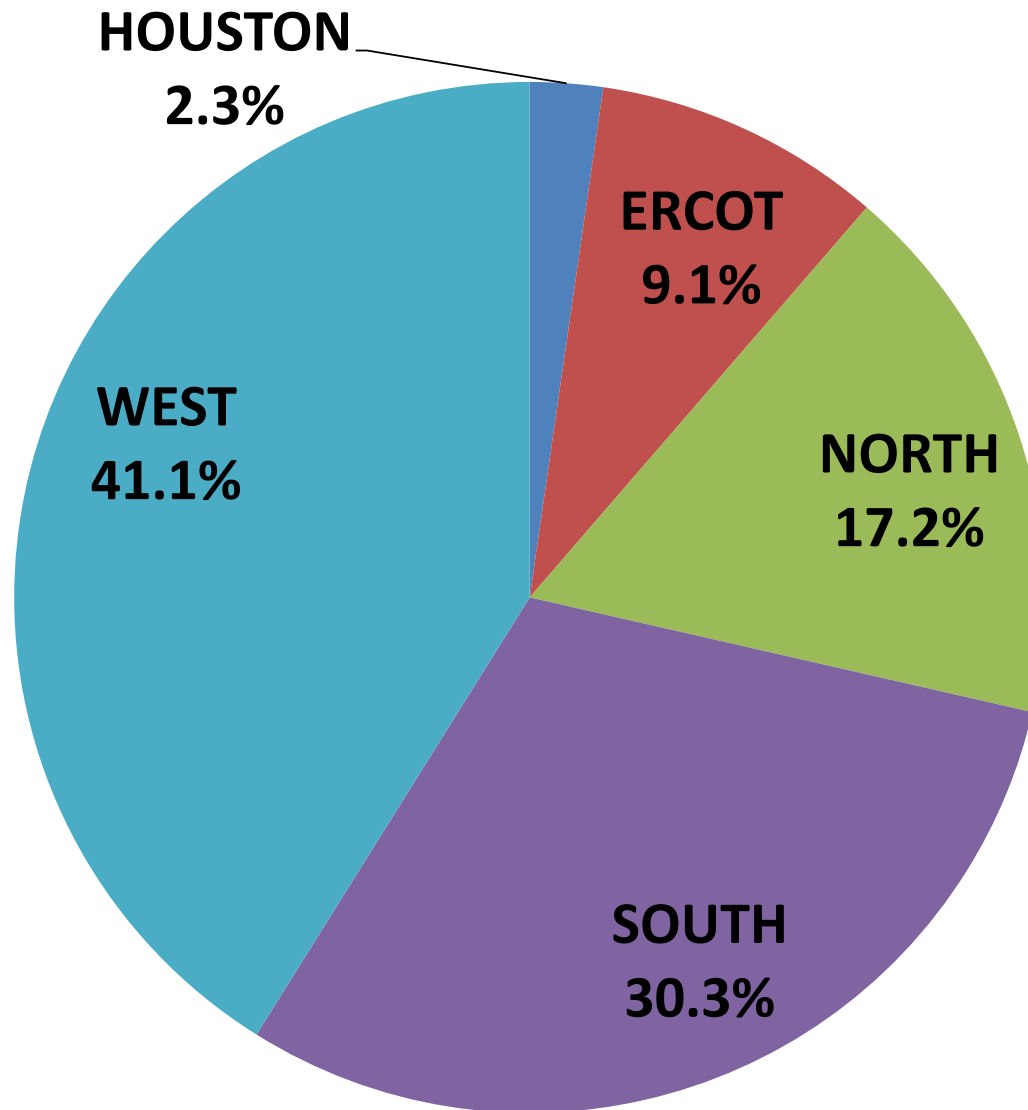
# Zonal Prices



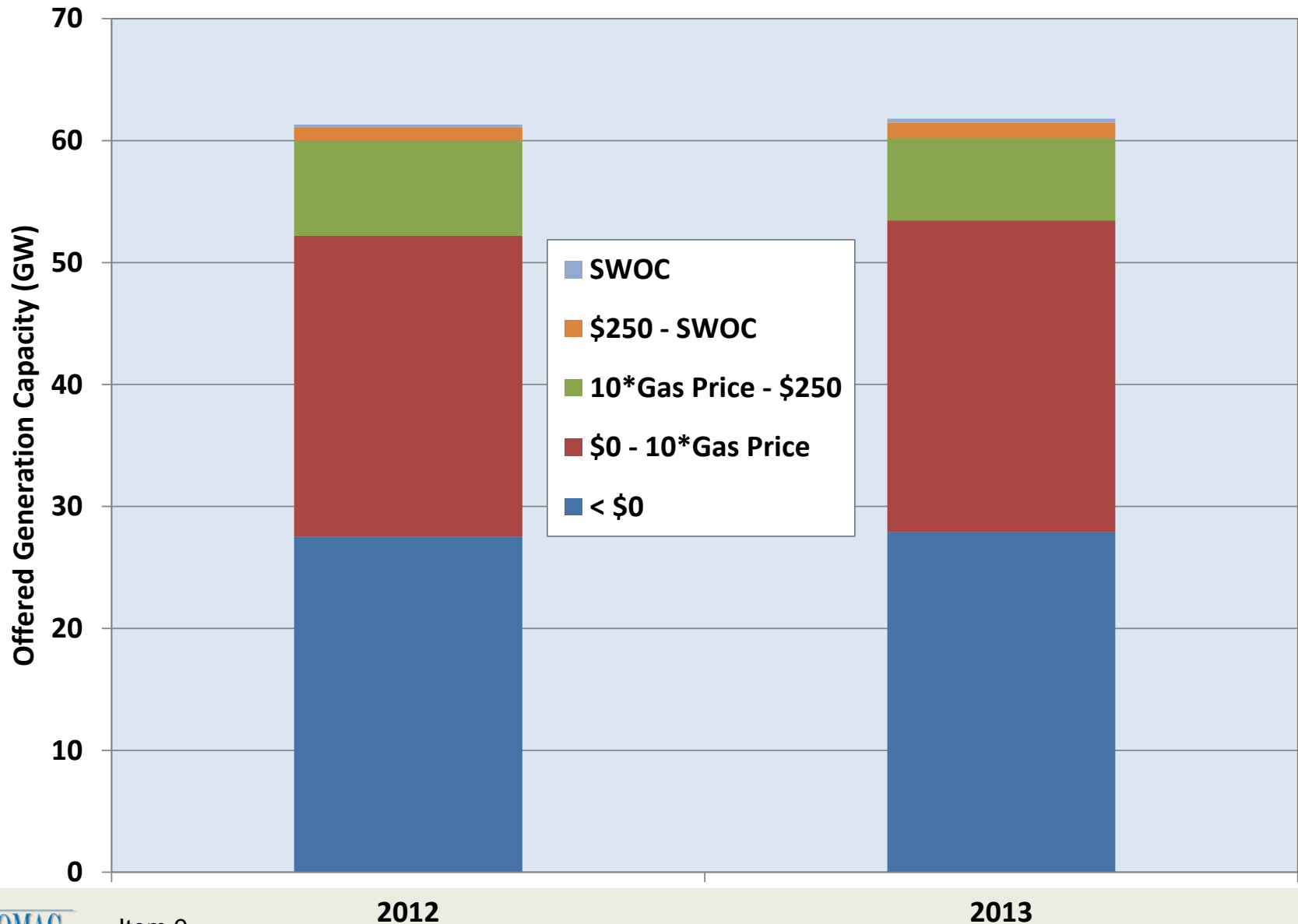
## 2013 SOM / Fig 8: West Zone and ERCOT Price Duration Curves



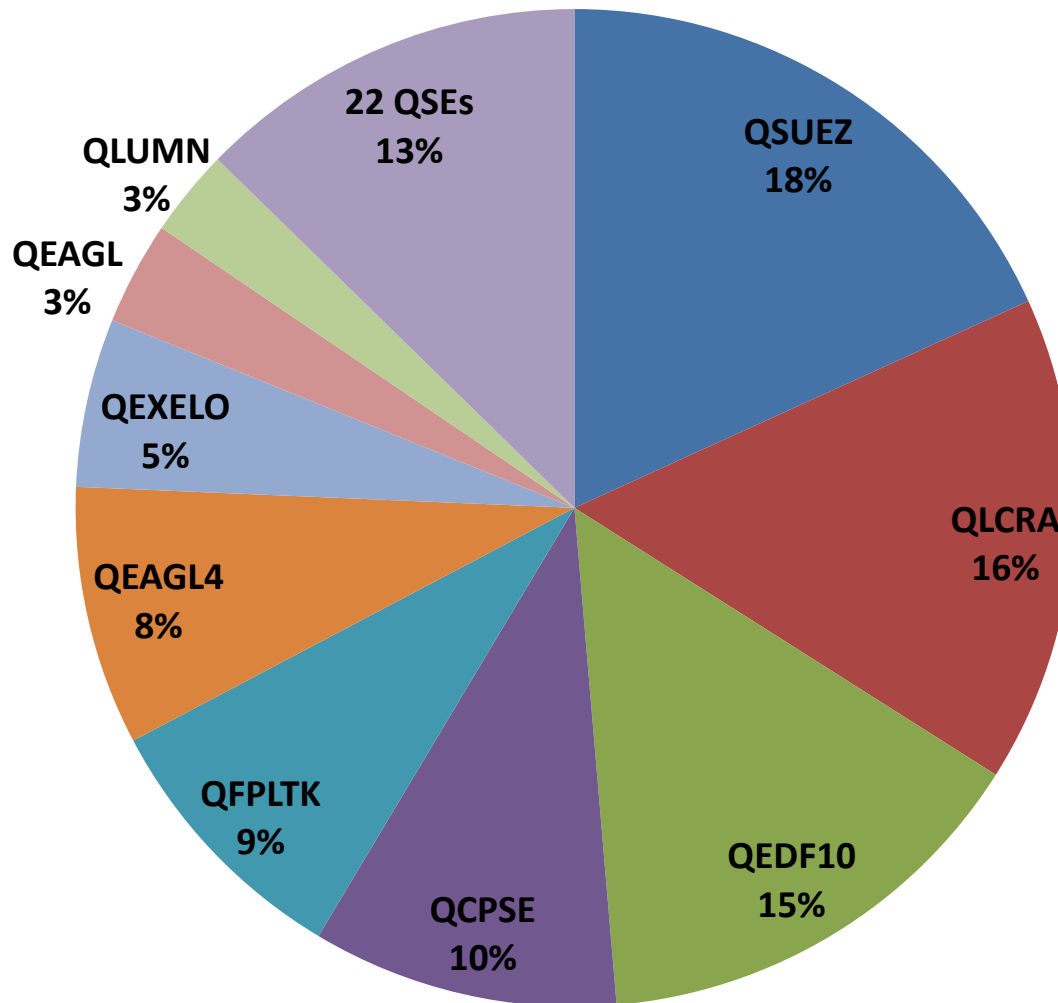
## 2013 SOM / Figure 37: Real Time Congestion Costs



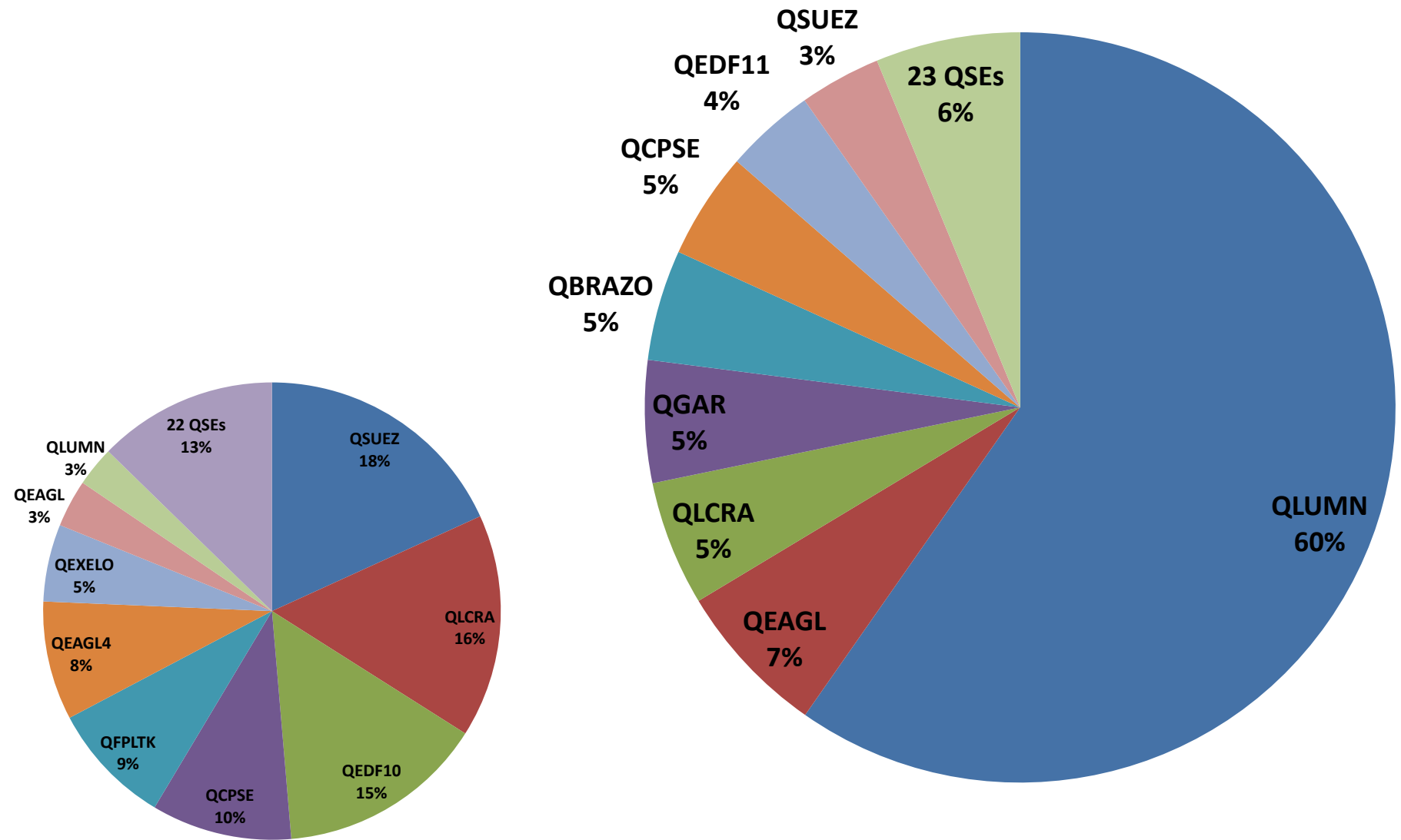
## 2013 SOM / Fig 14: Aggregated Generation Offer Stack - Summer



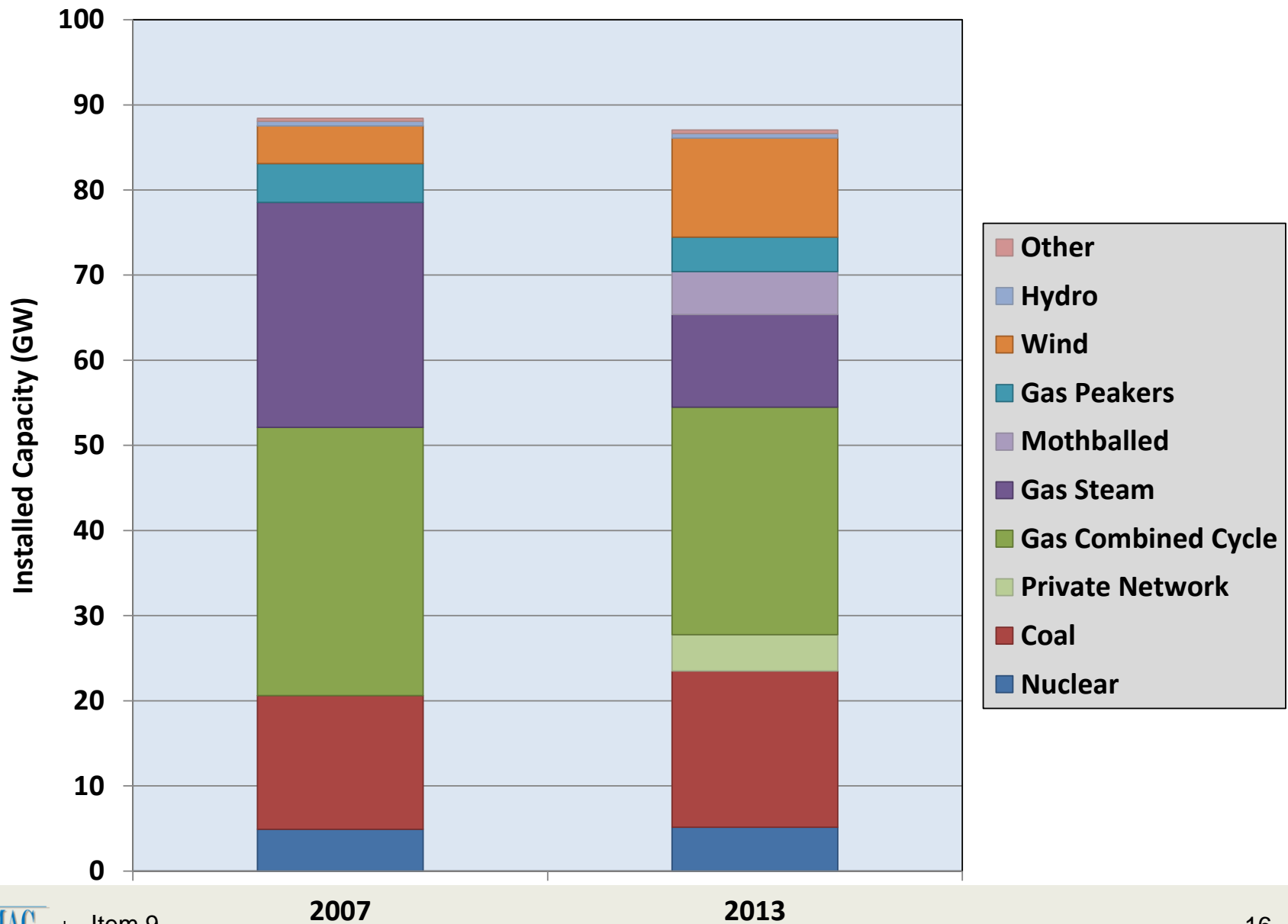
## 2013 SOM / Figure 31: Responsive Reserve Providers



## 2013 SOM / Figure 32: Non-Spin Providers



## 2013 SOM / Fig 53: Installed capacity by Type 2007 & 2013





## 2013 SOM / Figure 54: Annual Generation Mix

