



ERCOT Monthly Operational Overview (**May 2015**)

ERCOT Public
June 15, 2015

Grid Planning & Operations

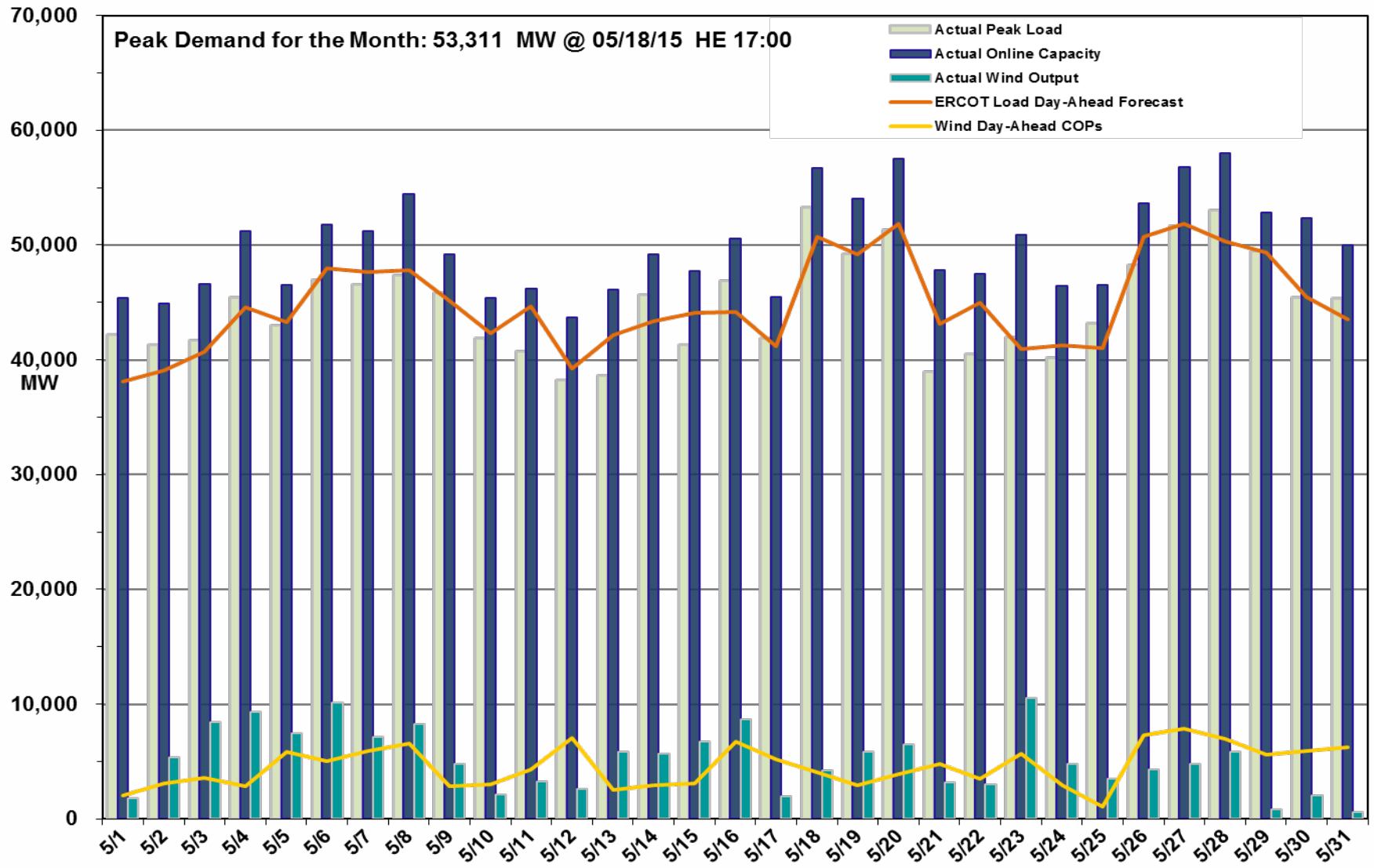
Operations

- The peak demand of 53,311 MW on May 18th was greater than the mid-term forecast peak of 50,729 MW of the same operating period. In addition, it was greater than the May 2014 actual peak demand of 52,625 MW. The instantaneous peak load on May 18th was 53,667 MW.
- Day-ahead load forecast error for May was 3.54%
- ERCOT issued three notifications
 - OCN due to the development of a new Generic Transmission Constraint (GTC) due to a local voltage stability issue (5/7)
 - Advisories issued on 5/17 & 5/31 due to missing the deadline for posting the DAM solution, delayed due to length of run time

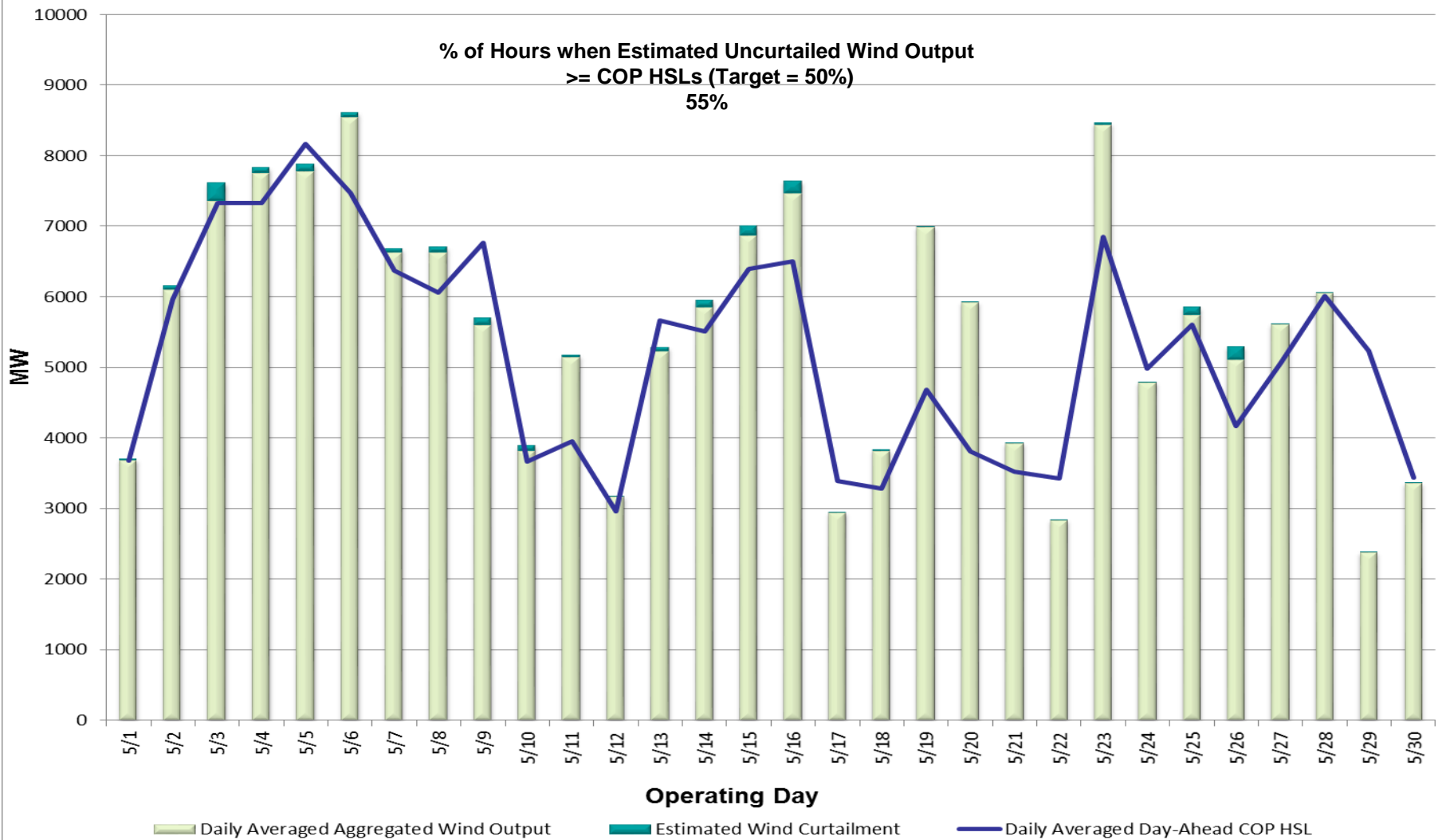
Planning Activities

- 262 active generation interconnection requests totaling 64,209 MW, including 25,142 MW of wind generation as of May 31, 2015. Ten additional requests and an increase of 2,491 MW from April 30, 2015.
- 13,424 MW wind capacity in commercial operations on May 31, 2015.

Daily Peak Demand: Hourly Average Actual vs. Forecast, Wind Day-Ahead COPs & On-line Capacity at Peak – May 2015



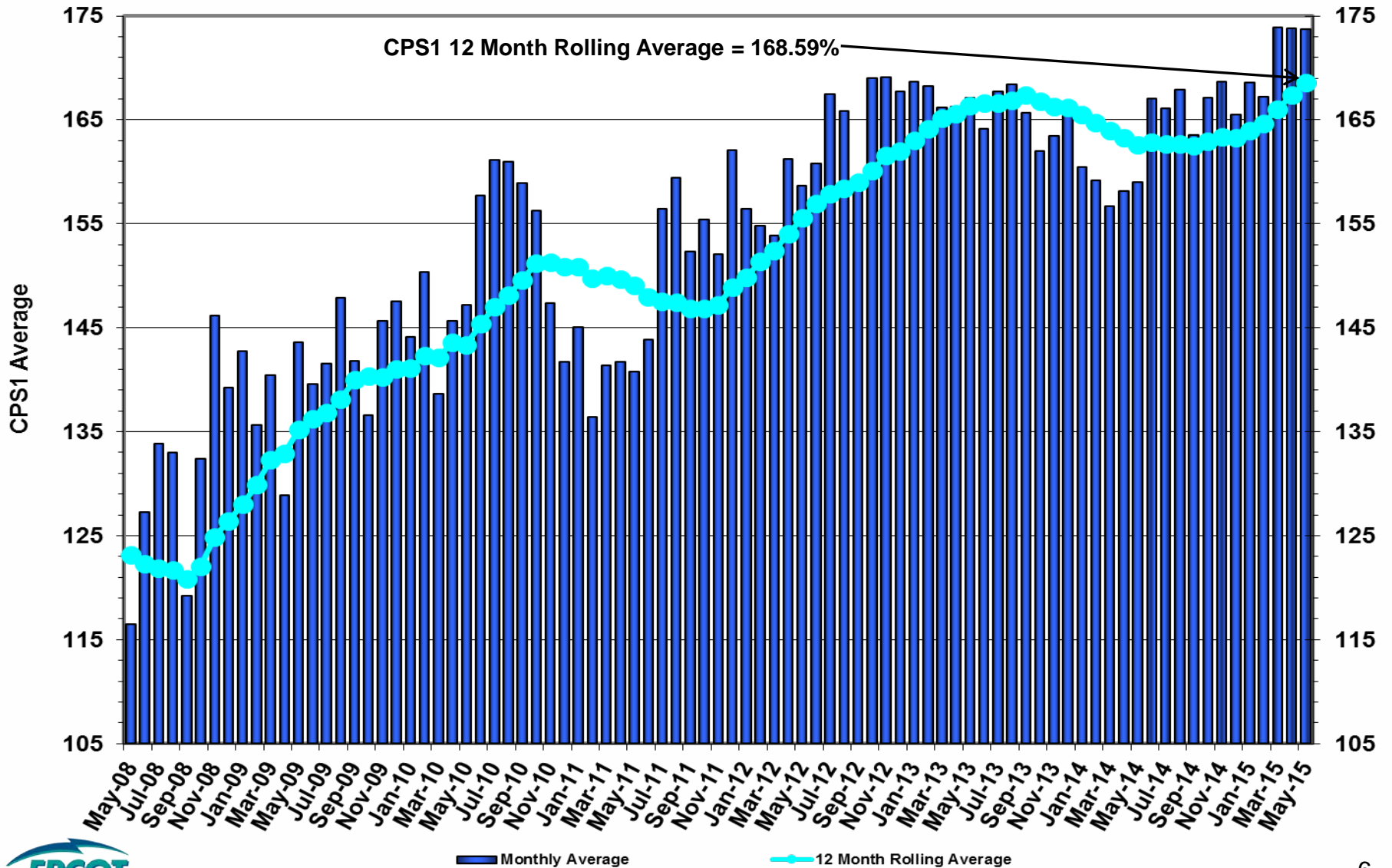
Actual Wind Output plus Curtailments vs. Wind Day-Ahead COPs for All Hours – May 2015



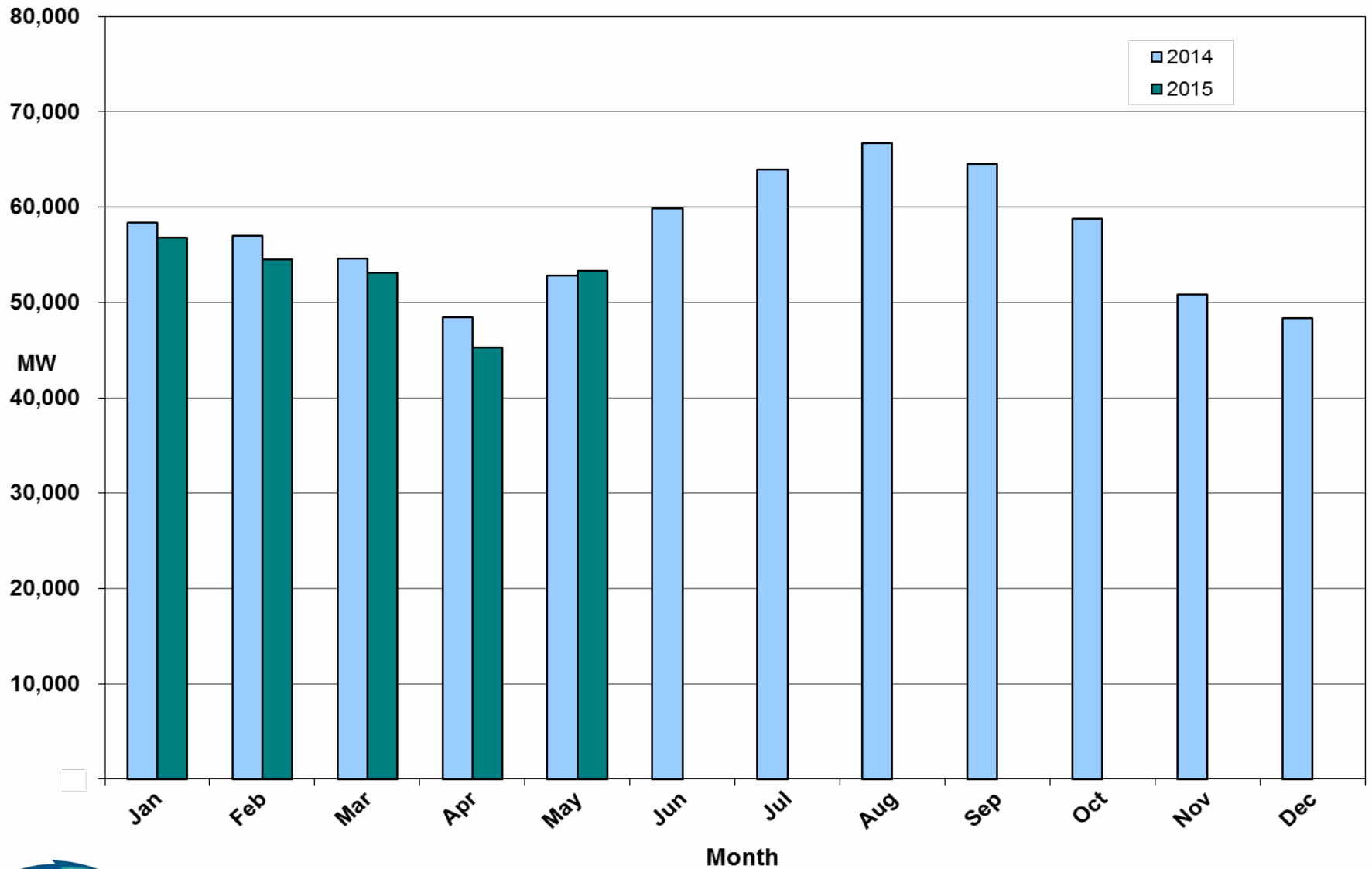
Note: QSEs must use the AWST 50% probability of exceedance forecast as the HSL in their COPs



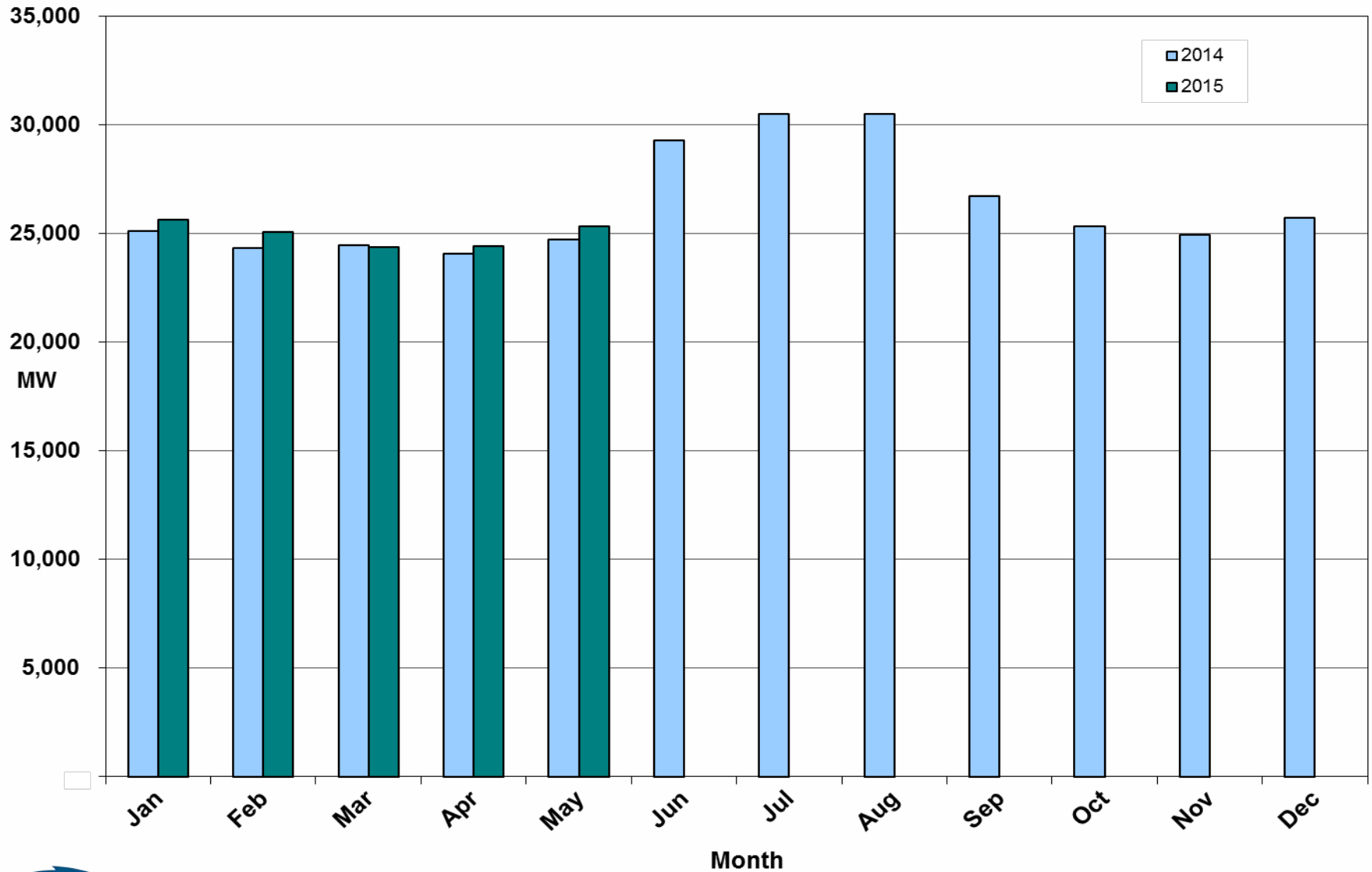
ERCOT's CPS1 Monthly Performance – May 2015



Monthly Peak Actual Demand – May 2015



Monthly Minimum Actual Demand – May 2015



Day-Ahead Load Forecast Performance – May 2015

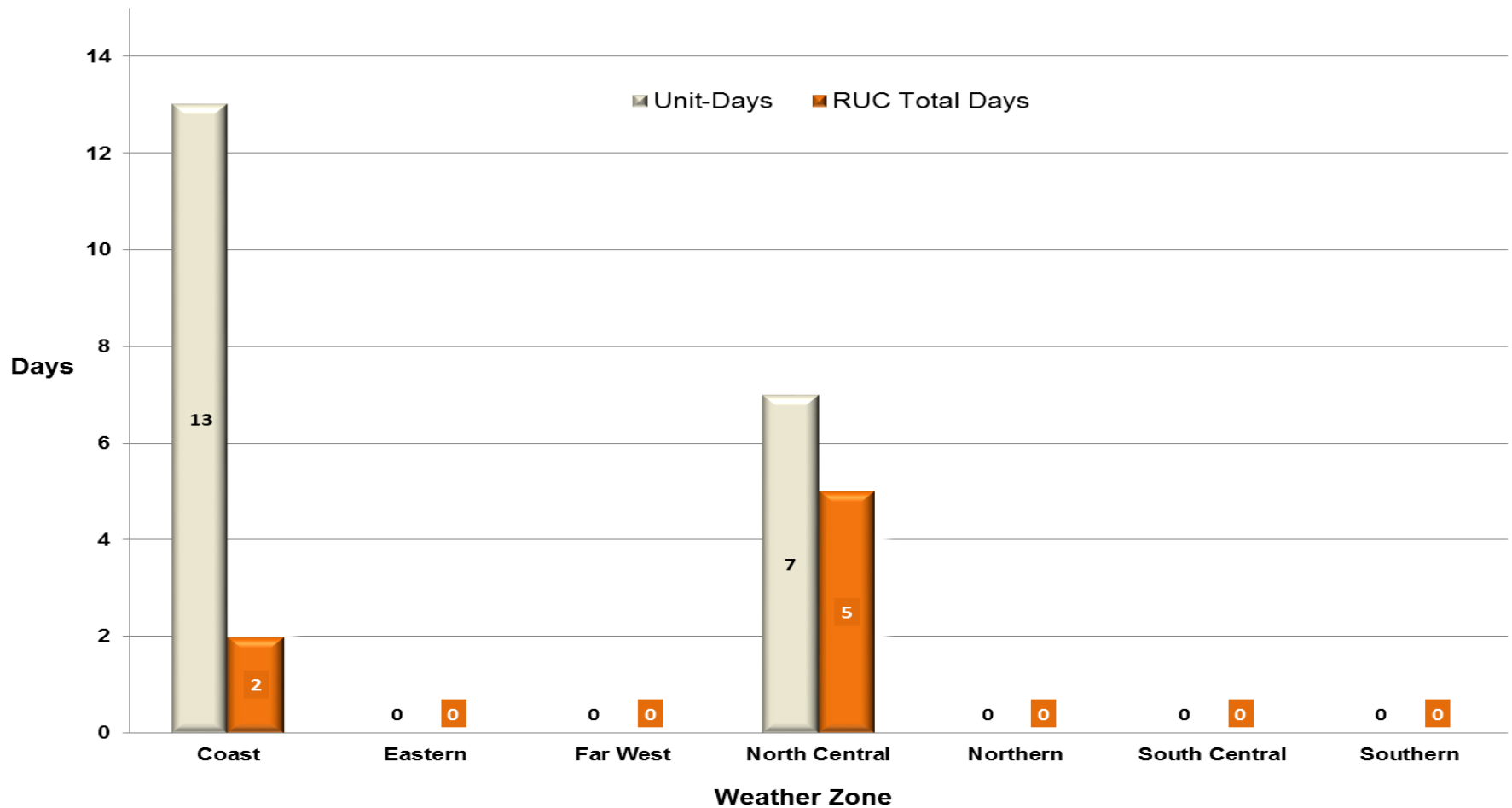
Mean Absolute Percent Error (MAPE) for ERCOT Mid-Term Load Forecast (MTLF)
Run at 14:00 Day Ahead

	2012 MAPE	2013 MAPE	2014 MAPE	2015 MAPE	May 2015 MAPE	
Average Annual MAPE	3.02	2.86	2.83	3.32	3.54	
Lowest Monthly MAPE	2.51	2.07	2.15	2.41	Lowest Daily MAPE	1.07 May – 8
Highest Monthly MAPE	3.49	3.50	3.70	3.81	Highest Daily MAPE	7.35 May – 24

Reliability Unit Commitment (RUC) Capacity by Weather Zone

May 2015

RUC Commitments by Weather Zone



Generic Transmission Constraints (GTCs) – May 2015

GTCs	Feb 15 Days GTCs	Mar 15 Days GTCs	Apr 15 Days GTCs	May 15 Days GTCs	Last 12 Months Total Days (Jun14 – May15)
North – Houston	0	0	0	2	2
Valley Import	0	0	0	0	4
SOP110	0	0	0	0	1
ZO_AJO	-	9	17	15	41
Gray - Tesla	-	-	-	4	4

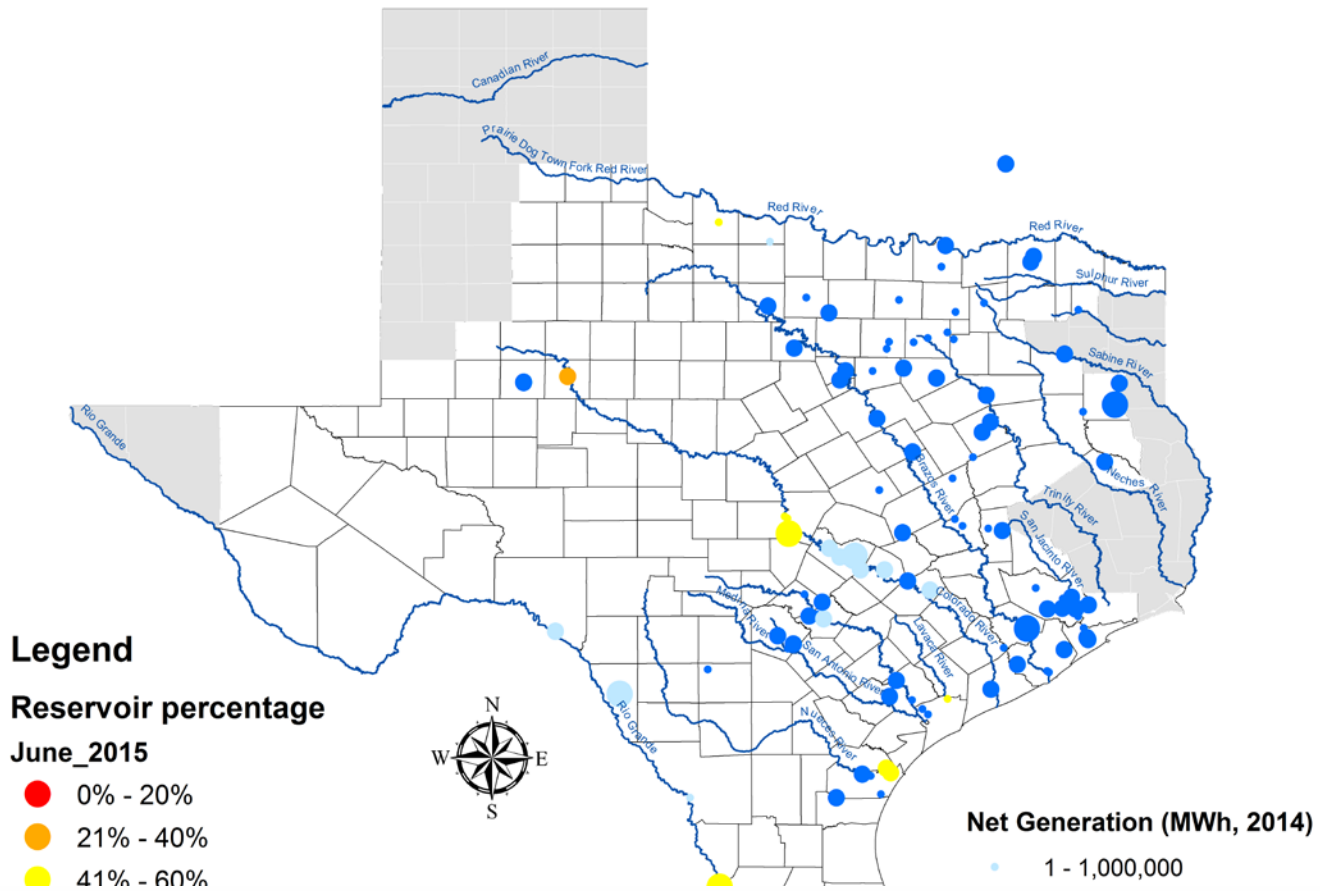
GTC: A transmission flow limit more constraining than a Transmission Element's normal limit established to constrain flow between geographic areas of the ERCOT Transmission System that is used to enforce stability and voltage constraints that cannot be modeled directly in ERCOT's transmission security analysis applications.

Note: This table lists how many times a constraint has been activated to avoid exceeding a GTC limit, it does not imply an exceedance of the GTC occurred.

Advisories and Watches - **May 2015**

- One OCN due to the development of a new Generic Transmission Constraint (GTC) due to a local voltage stability issue
 - Issued on 5/7
- Advisories issued on 5/17 & 5/31 due to missing the deadline for posting the DAM solution, delayed due to length of run time

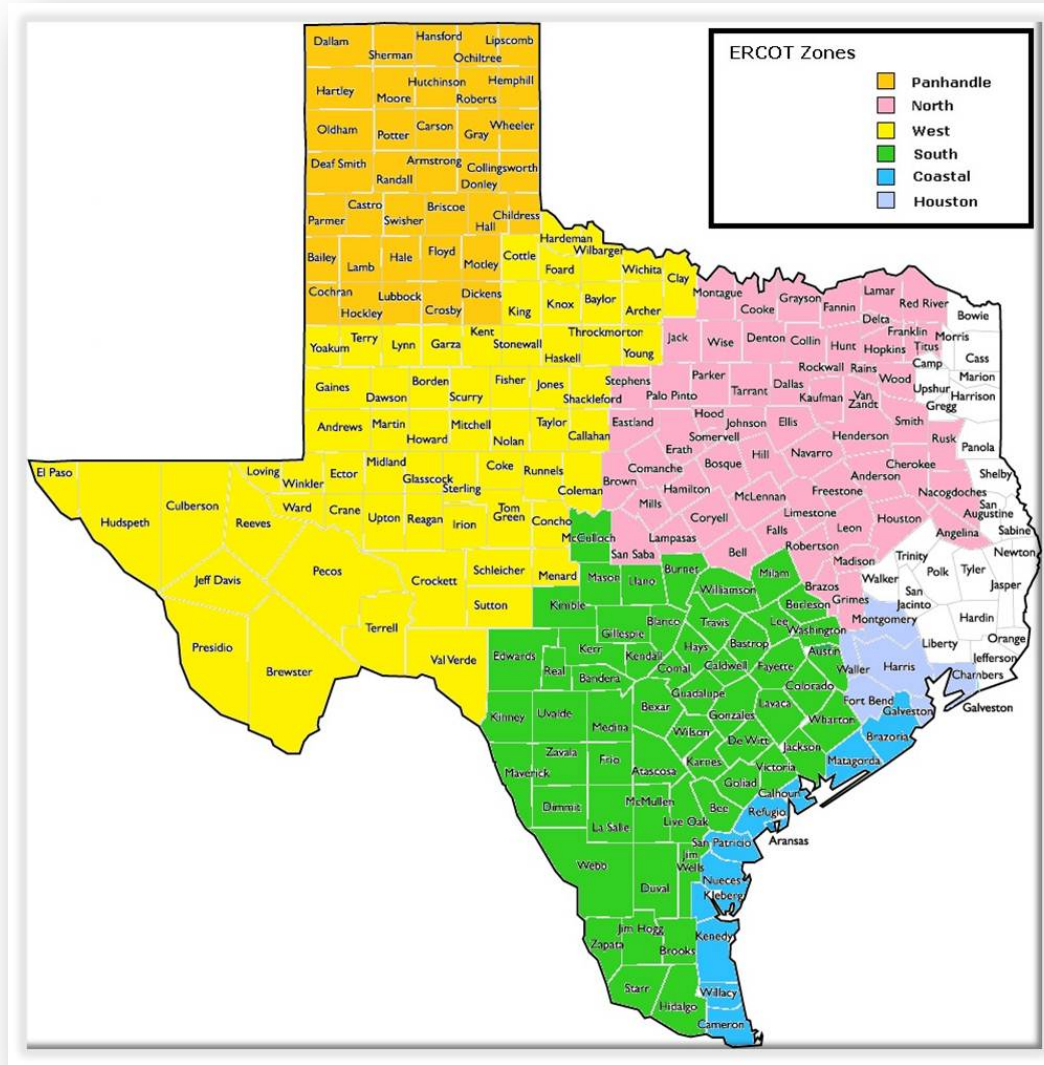
Lake Levels Update – June 1, 2015



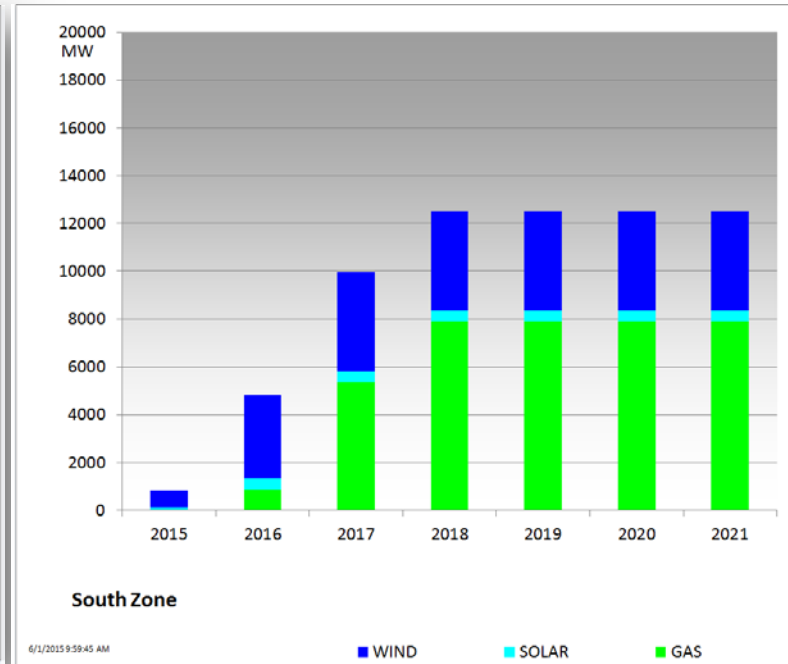
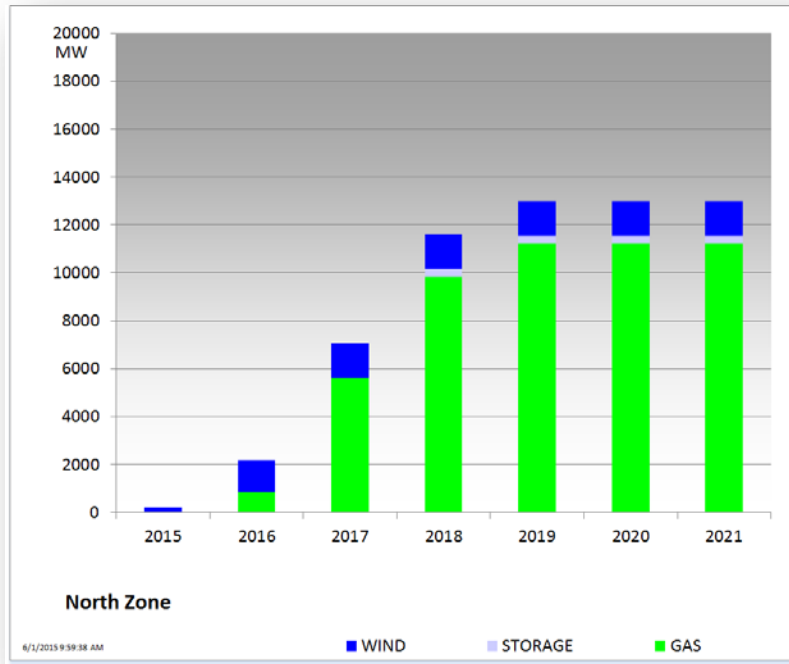
Planning Summary – May 2015

- ERCOT is currently tracking 262 active generation interconnection requests totaling 64,209 MW. This includes over 25,142 MW of wind generation.
- ERCOT is currently reviewing proposed transmission improvements with a total cost of \$872.1 Million.
- Transmission Projects endorsed in 2015 total \$189.8 Million.
- All projects (in engineering, routing, licensing, and construction) total approximately \$6.15 Billion.
- Transmission Projects energized in 2015 total about \$32.8 Million.

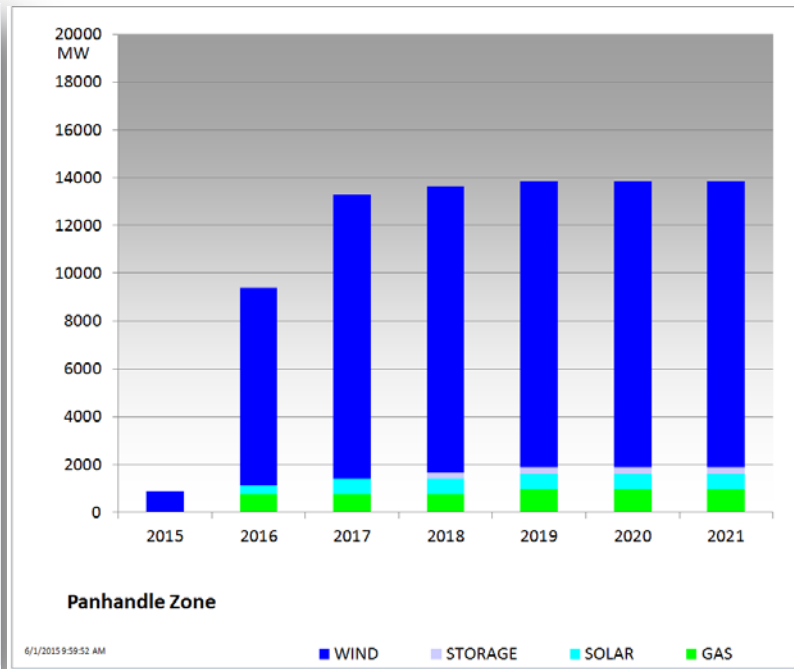
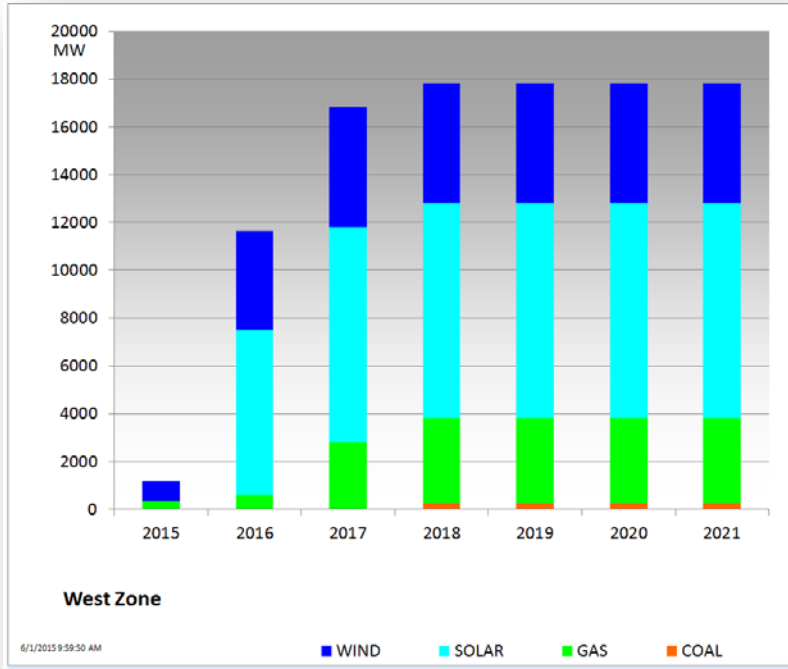
Cumulative MW Capacity of Interconnection Requests by Zone – May 2015



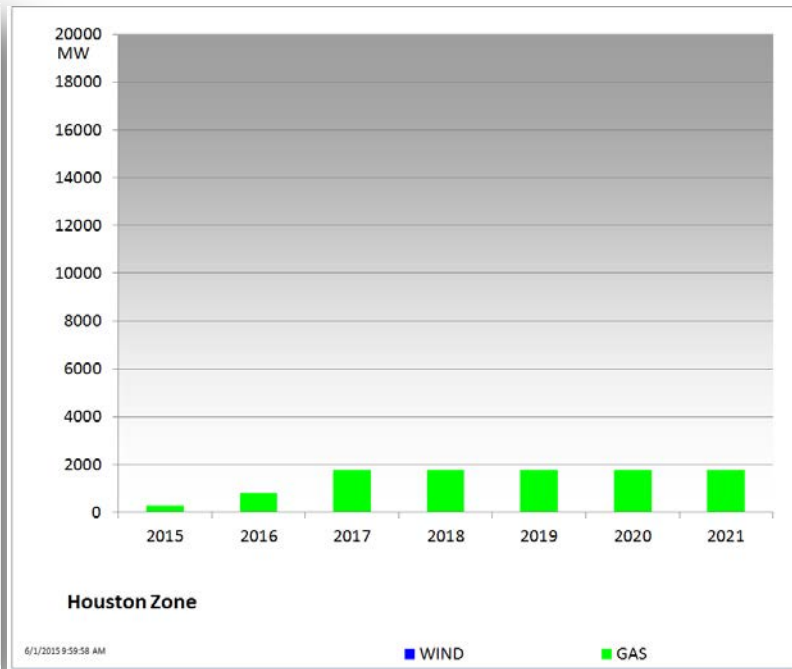
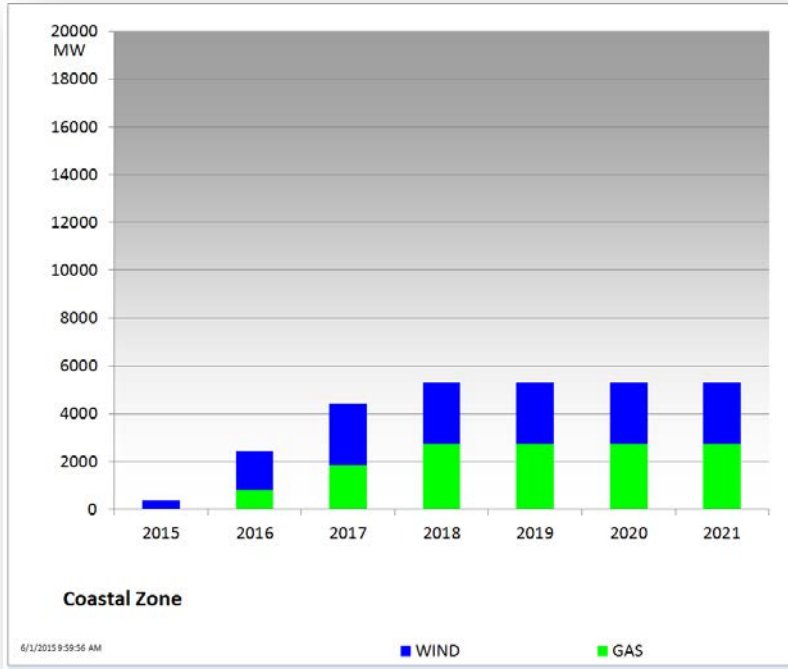
Cumulative MW Capacity of Interconnection Requests by Zone – May 2015



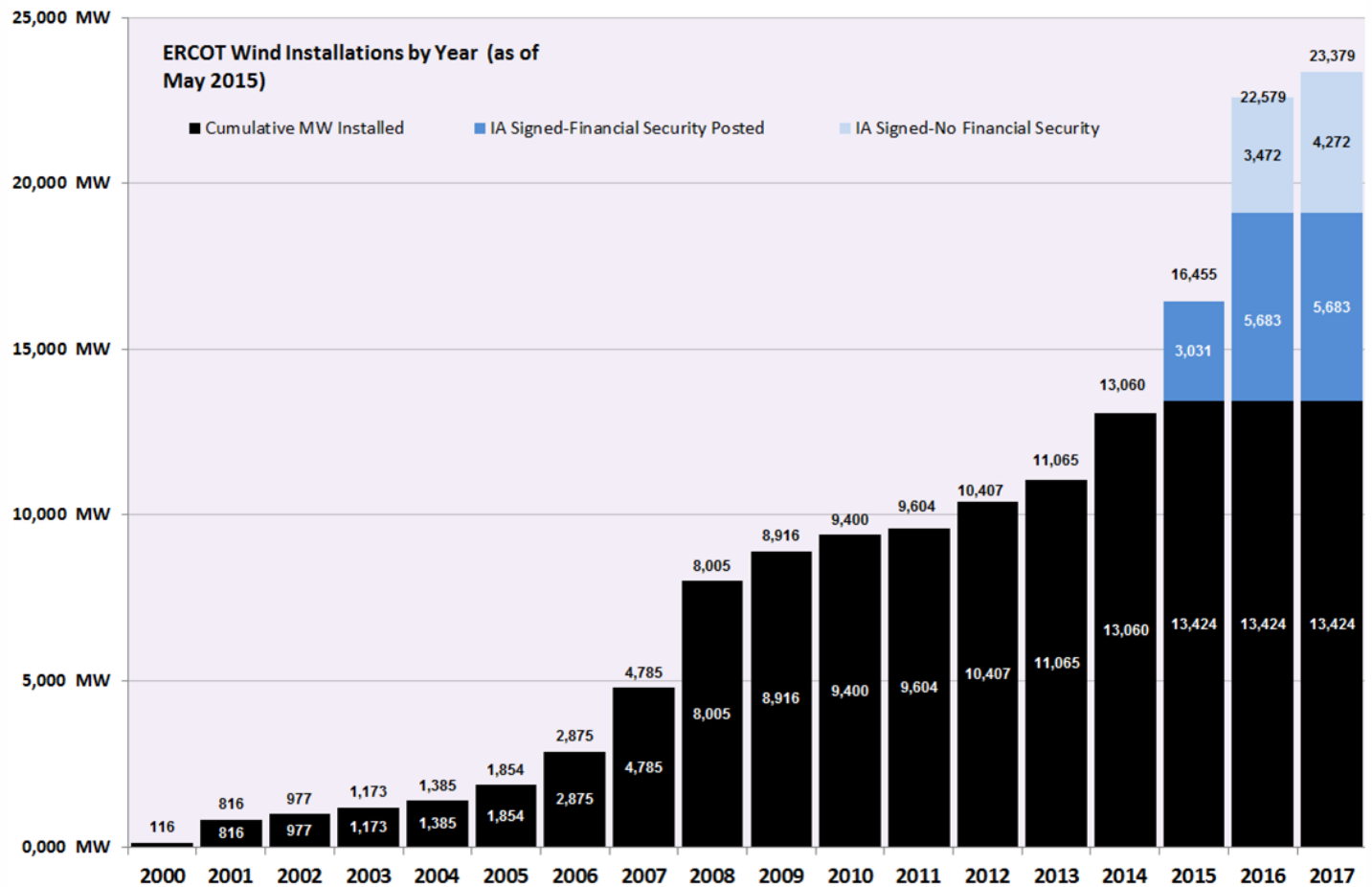
Cumulative MW Capacity of Interconnection Requests by Zone – May 2015



Cumulative MW Capacity of Interconnection Requests by Zone – May 2015



Wind Generation – May 2015

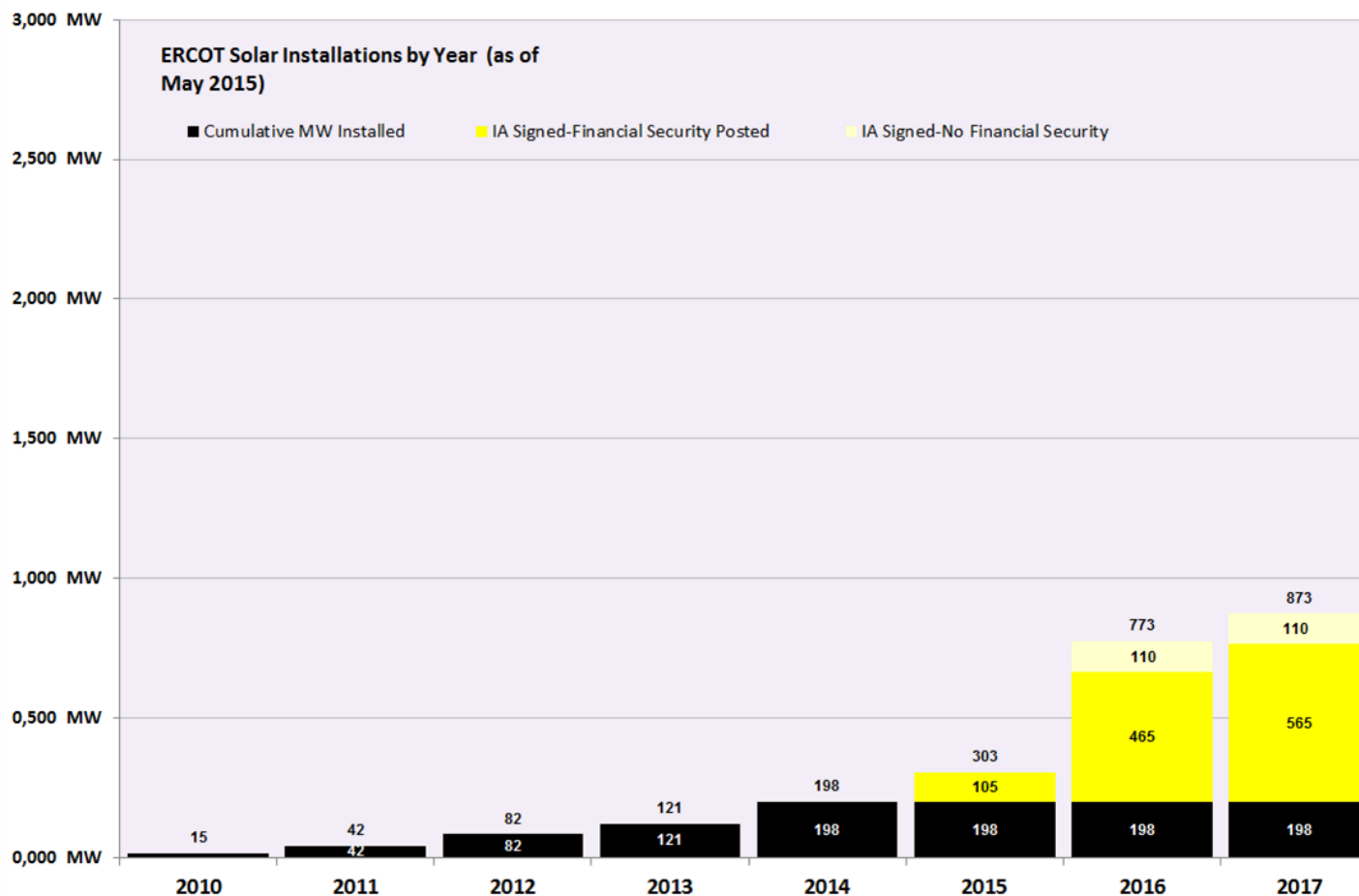


The data presented here is based upon the latest registration data provided to ERCOT by the resource owners and can change without notice. Any capacity changes will be reflected in current and subsequent years' totals. Scheduling delays will also be reflected in the planned projects as that information is received.

This chart reflects planned units in the calendar year of submission rather than installations by peak of year shown.



Solar Generation – May 2015



The data presented here is based upon the latest registration data provided to ERCOT by the resource owners and can change without notice. Any capacity changes will be reflected in current and subsequent years' totals. Scheduling delays will also be reflected in the planned projects as that information is received.

This chart reflects planned units in the calendar year of submission rather than installations by peak of year shown.

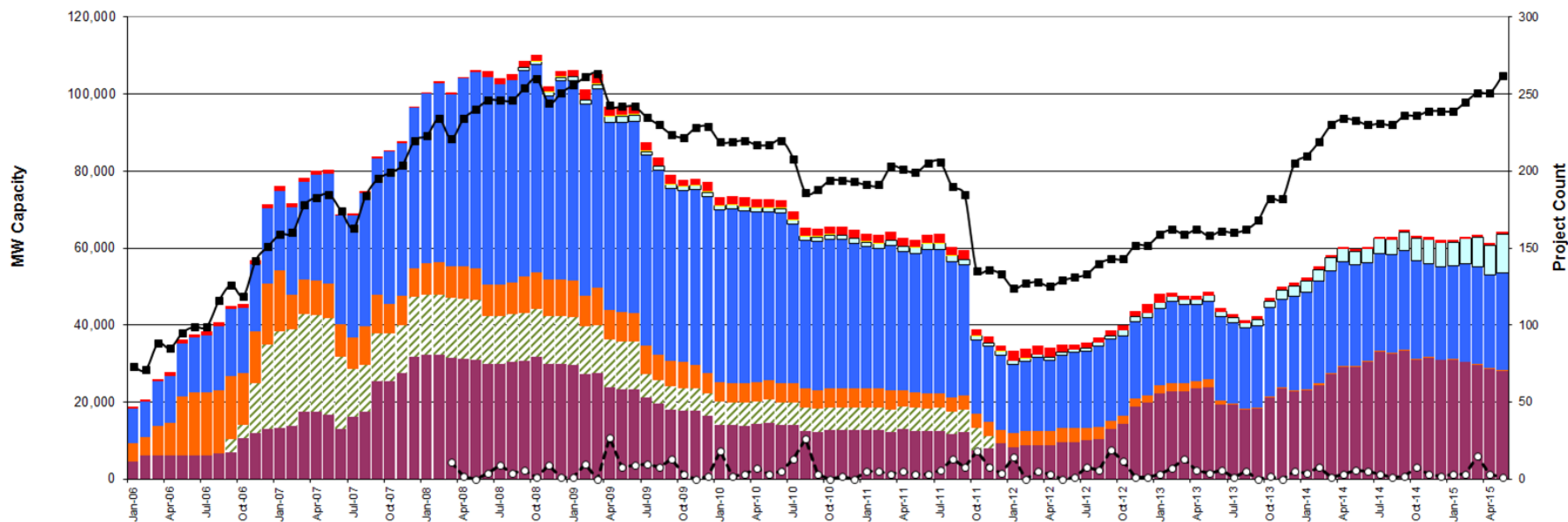


Generation Interconnection Activity by Fuel – May 2015

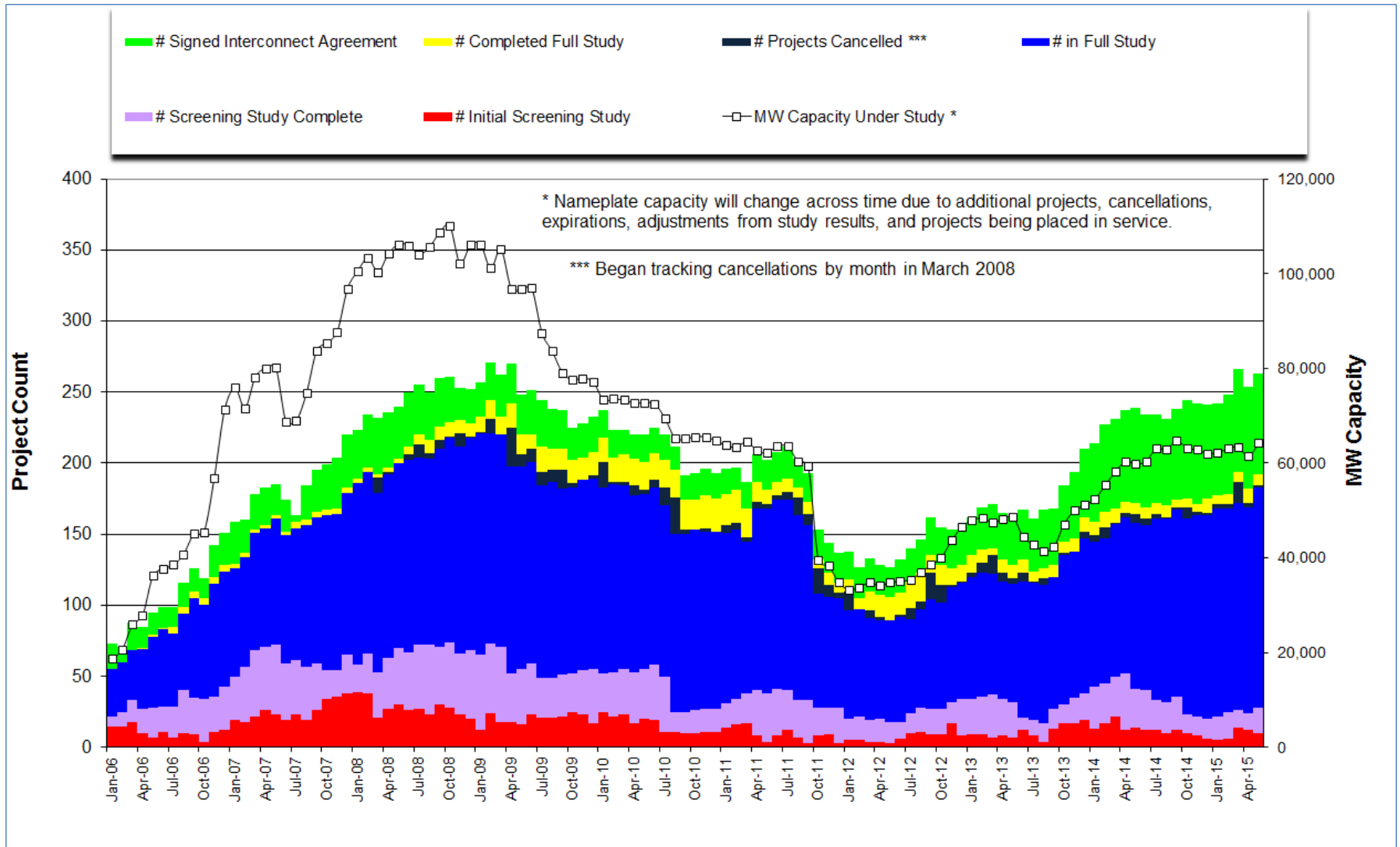


*Prior to September 2008, Category "Other" included "Solar" and "Biomass"

Projects in all phases of interconnection study are reflected in this graph
 Project cancellation tracking by month began in March 2008

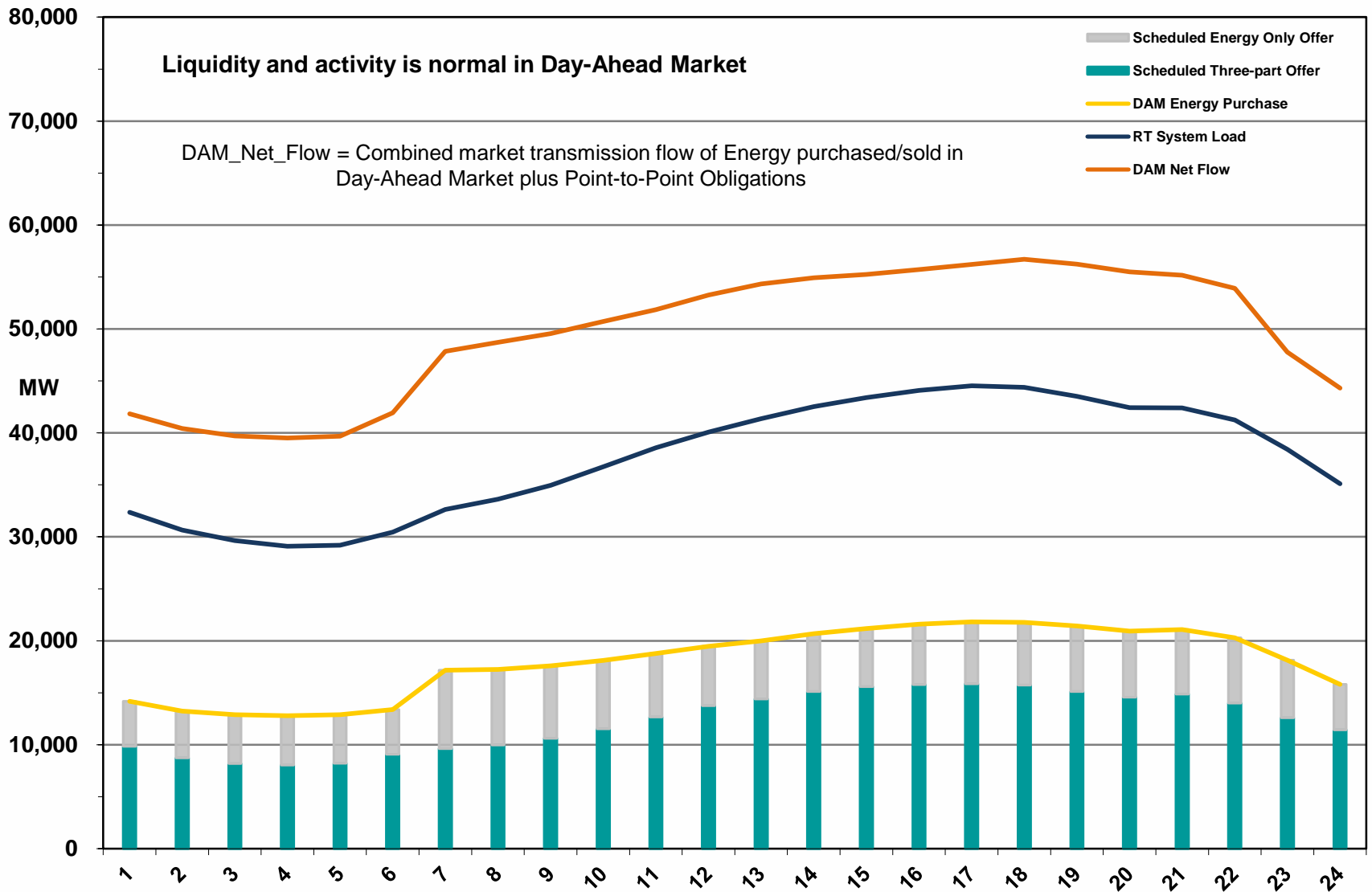


Generation Interconnection Activity by Project Phase – May 2015

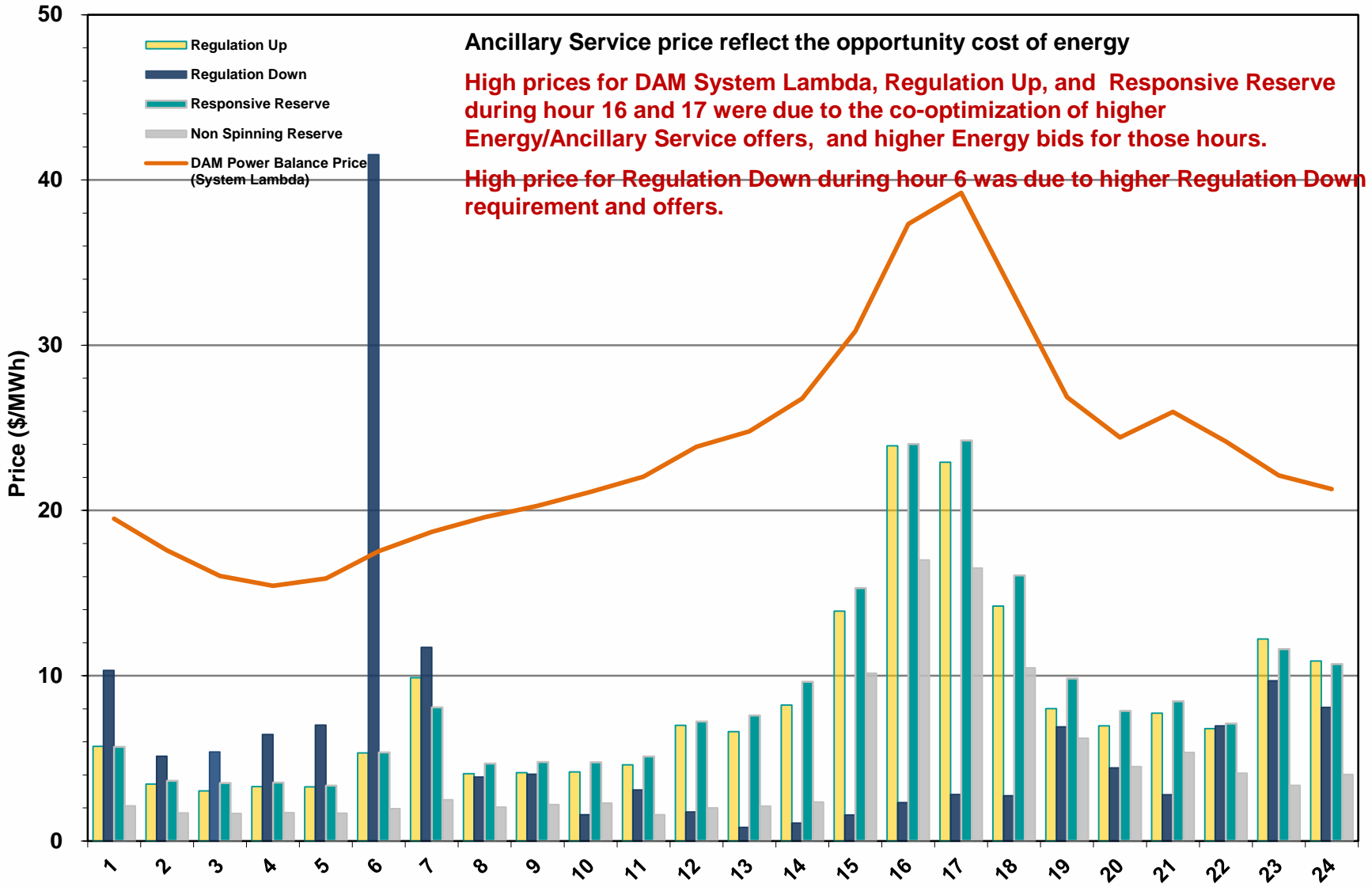


Market Operations

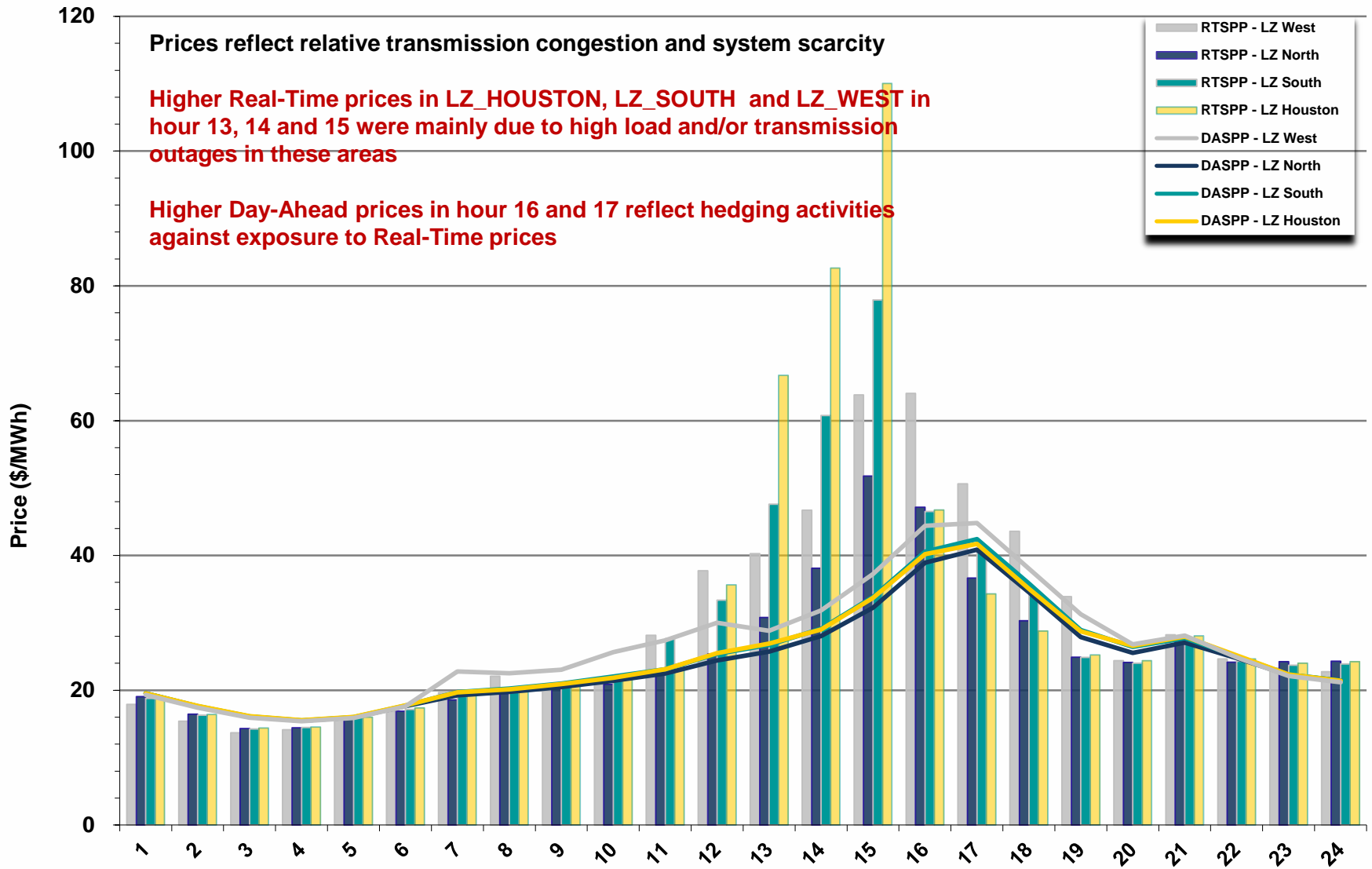
Day-Ahead Schedule (Hourly Average) – May 2015



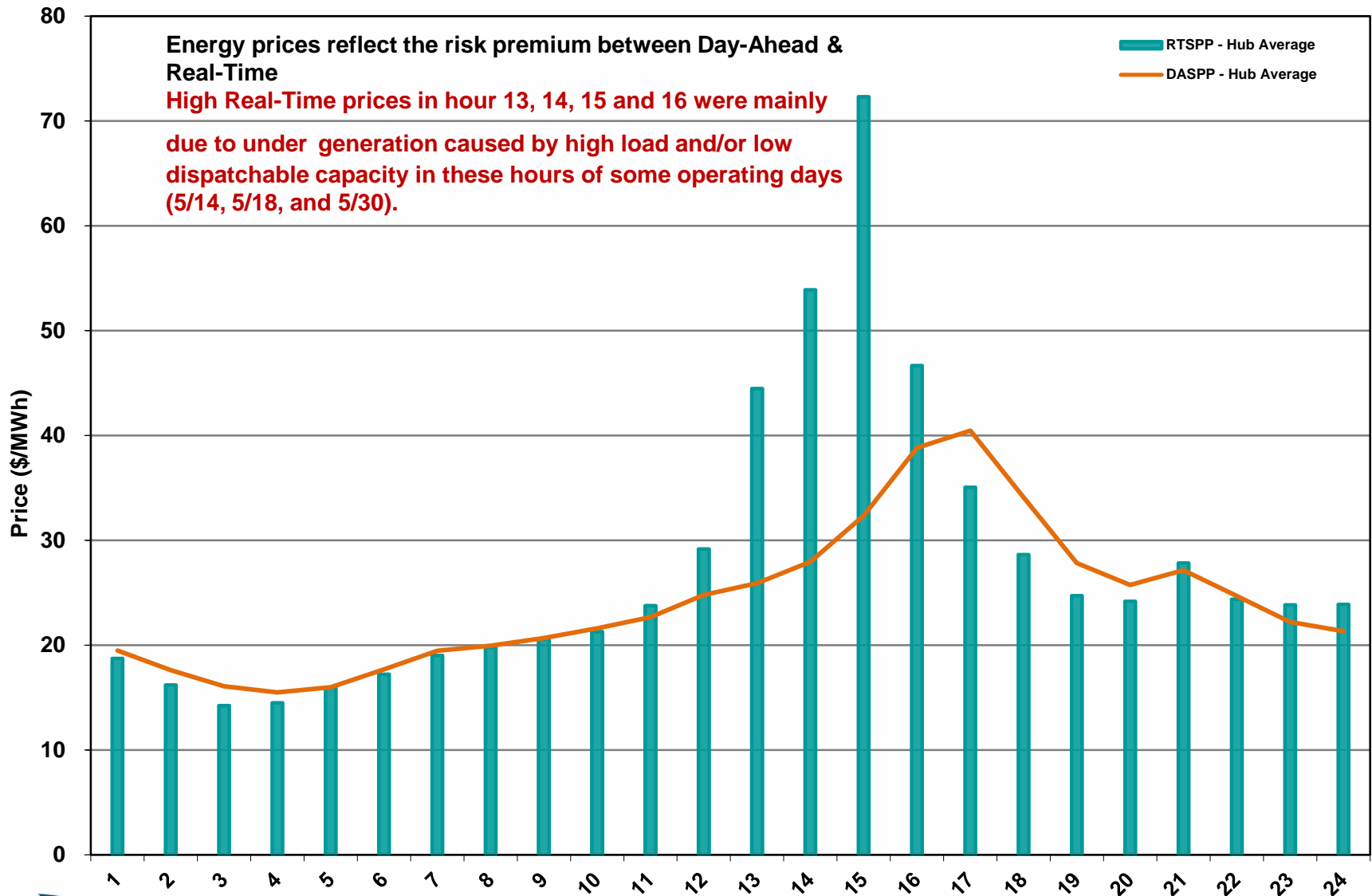
Day-Ahead Electricity And Ancillary Service Hourly Average Prices – May 2015



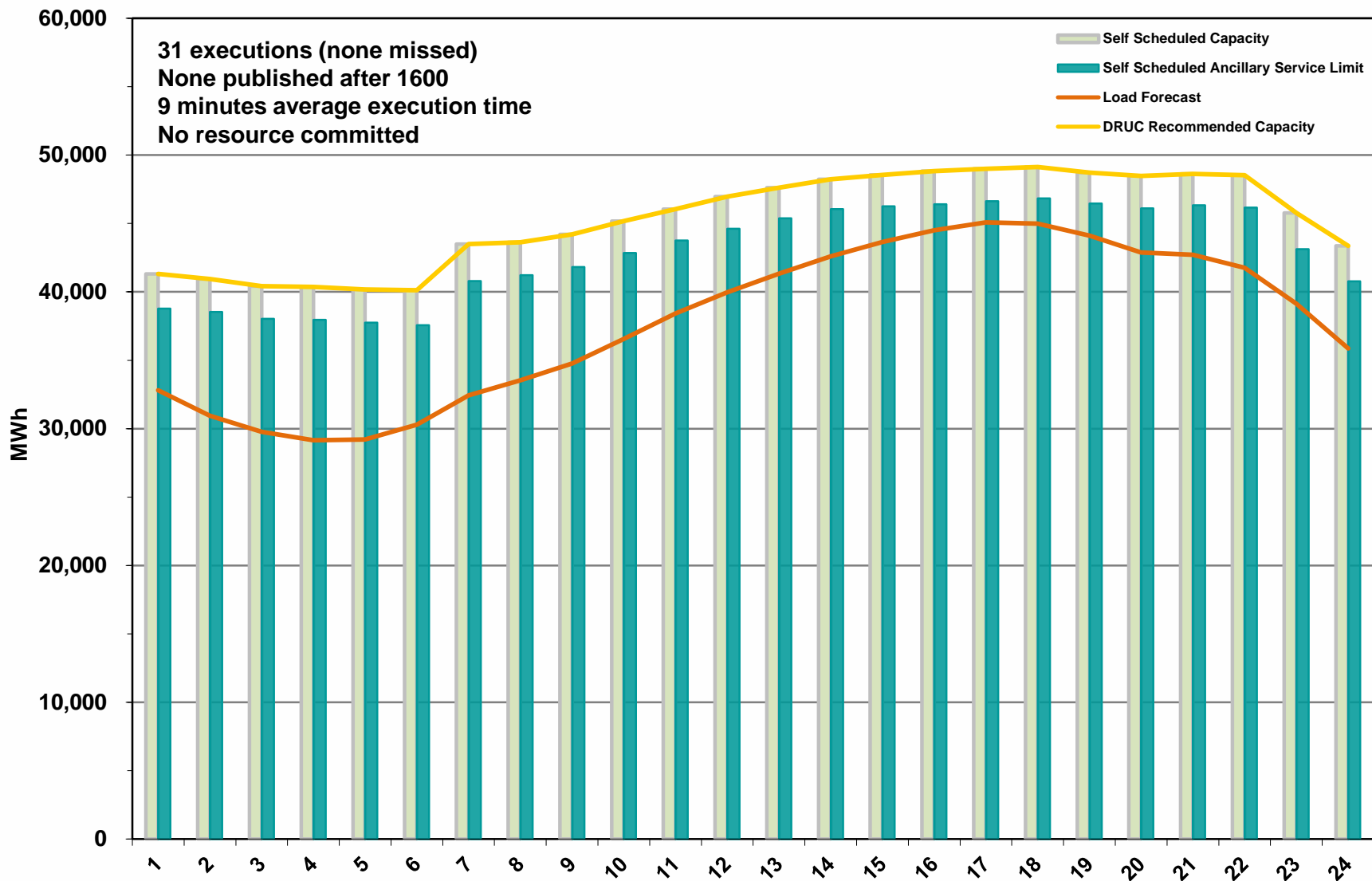
Day-Ahead Vs Real-Time Load Zone SPP (Hourly Average) – May 2015



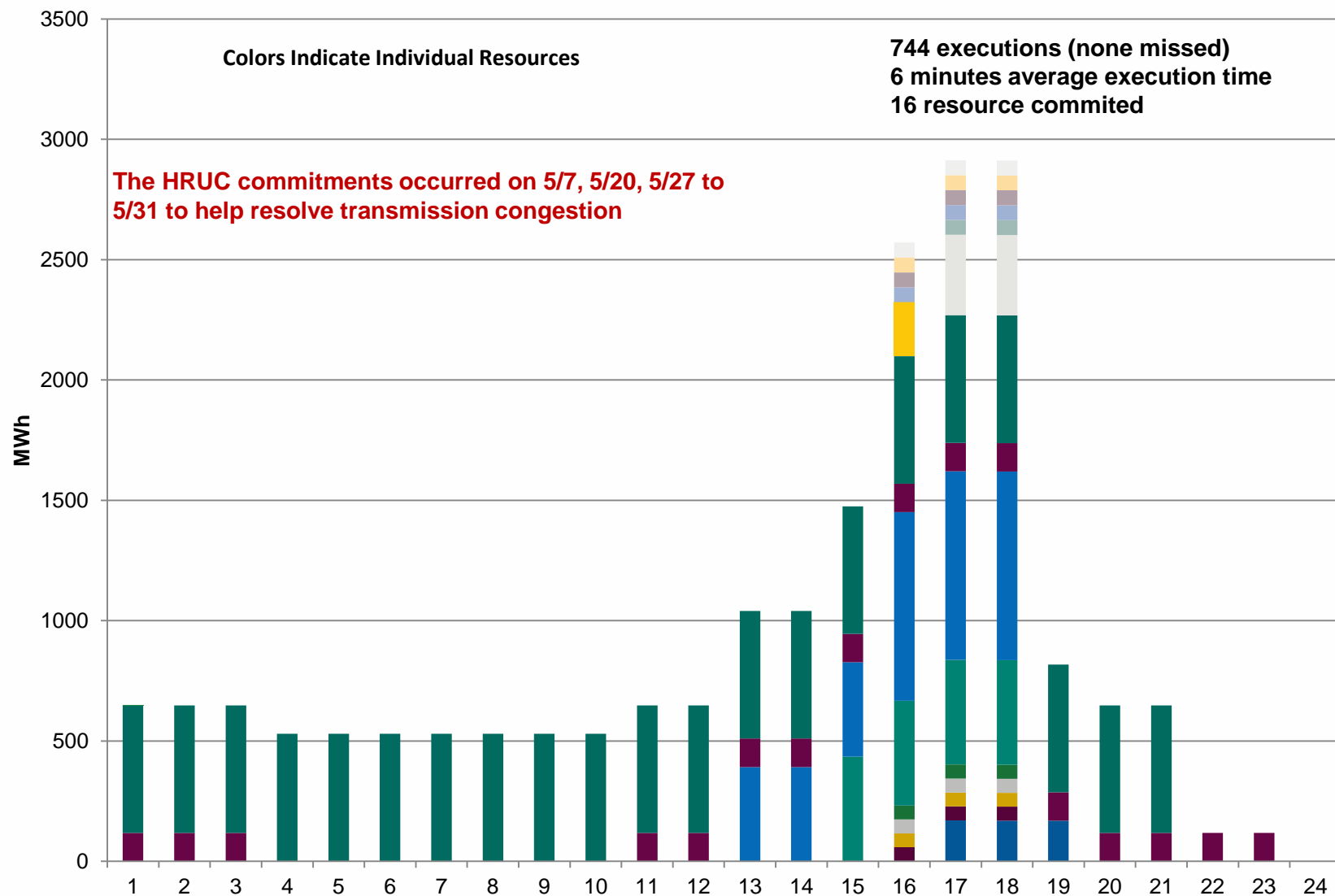
Day-Ahead Vs Real-Time Hub Average SPP (Hourly Average) – May 2015



DRUC Monthly Summary (Hourly Average) – May 2015



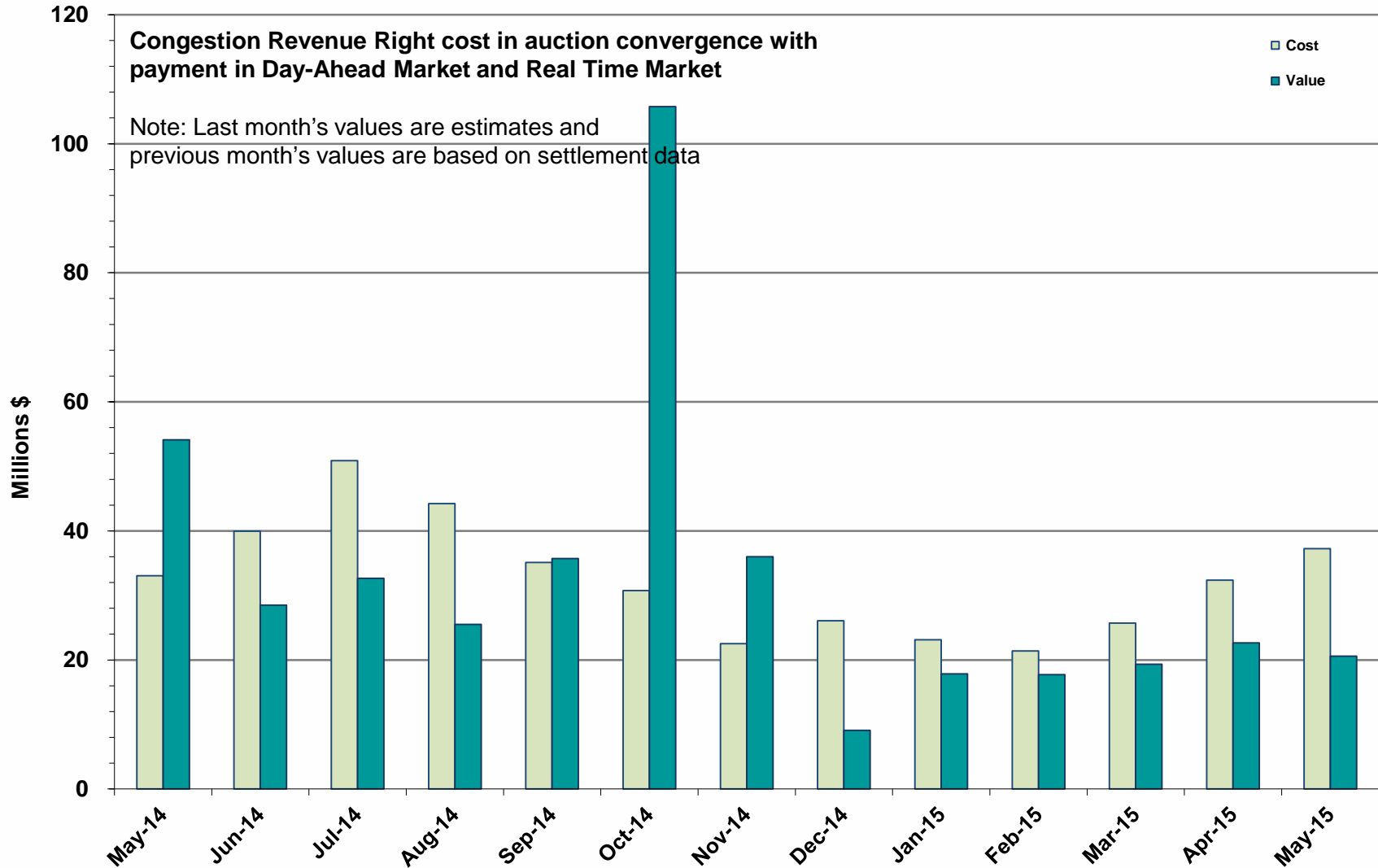
HRUC Monthly Summary – May 2015



Non-Spinning Reserve Service Deployment – May 2015

Deployment Start Time	Deployment End Time	Deployment Duration (Hours)	Max Deployment (MW)	Reason
05/21/2015 22:03	05/21/2015 23:59	1.92	61	Voltage Support
05/22/2015 11:52	05/22/2015 17:00	5.13	60	Voltage Support
05/30/2015 14:04	05/30/2015 15:56	1.85	62	Transmission Congestion

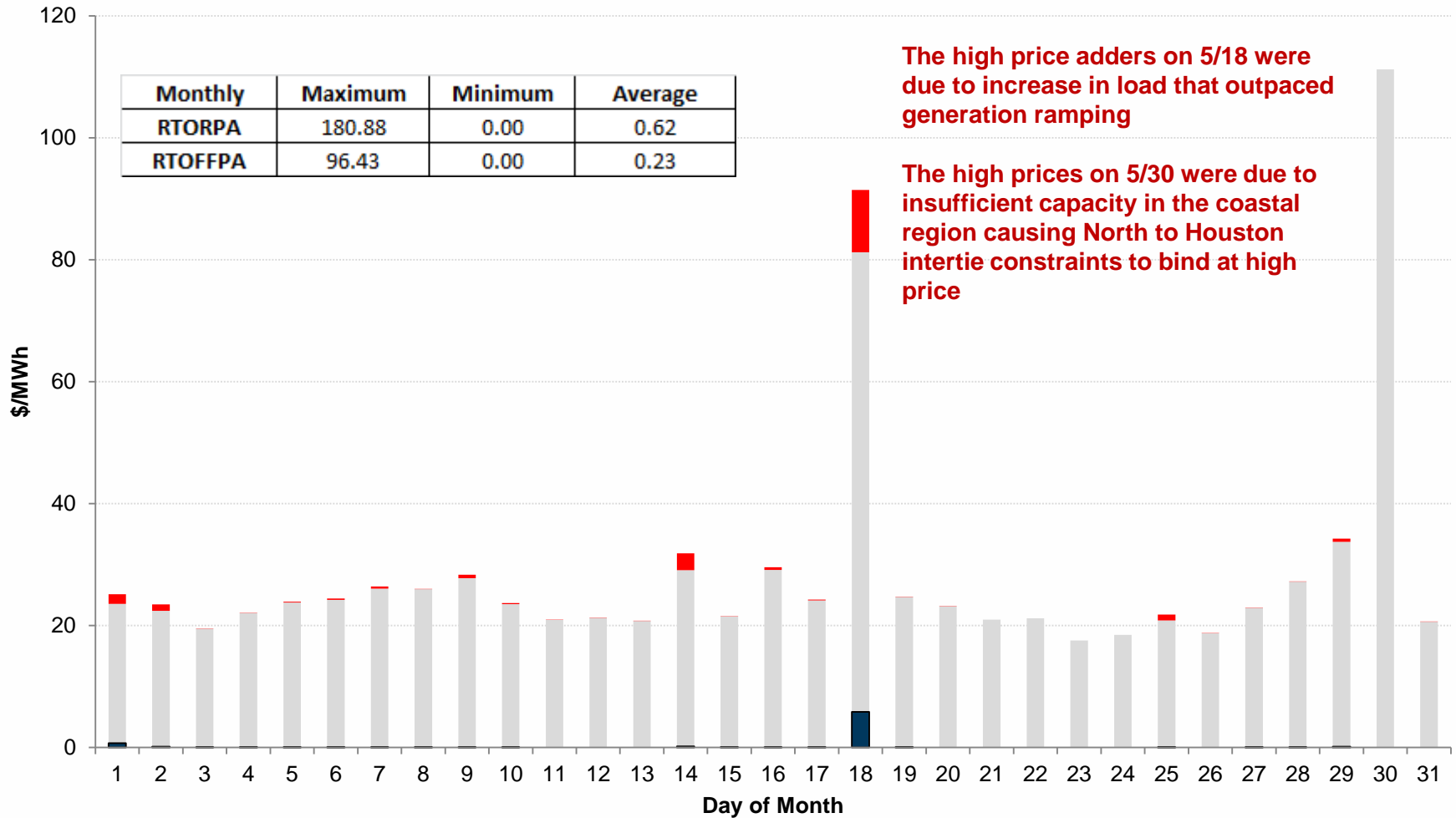
CRR Price Convergence – May 2015



ORDC Price Adder (Daily Average) – May 2015

Average Daily Real-Time System Lambda, Real-Time On-Line Reserve Price Adder (RTORPA), and Real-Time Offline Reserve Price Adder (RTOFFPA) - May 2015

Monthly	Maximum	Minimum	Average
RTORPA	180.88	0.00	0.62
RTOFFPA	96.43	0.00	0.23



ERS Procurement for **June 2015 – September 2015**

	BH1	BH2	BH3	NBH
ERS-10 MW Procured	424.16	371.56	356.50	375.59
ERS-30 MW Procured	593.46	535.94	502.46	477.44
Weather-Sensitive ERS-30 MW	0.00	21.74	21.74	0.00
Total MW Procured	1017.62	929.24	880.70	853.03
Clearing Price	\$2.40	\$26.44	\$26.96	\$2.80

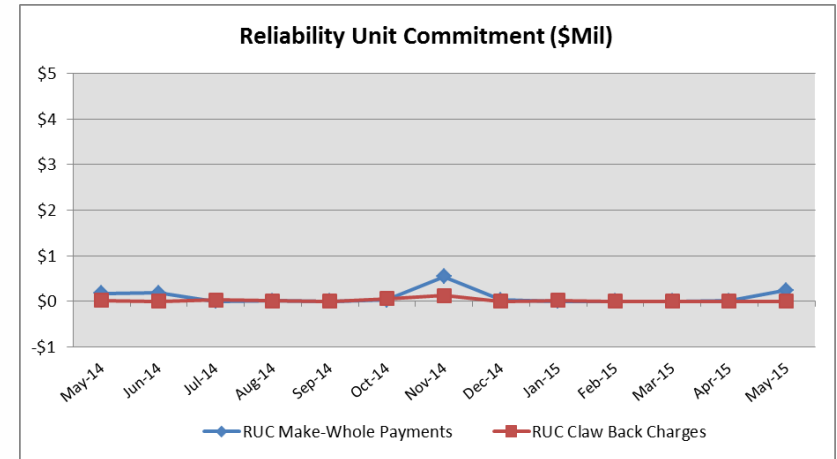
BH1 - Business Hours 1
 BH2 - Business Hours 2
 BH3 - Business Hours 3
 NBH - Non-Business Hours

HE 0900 through 1300, Monday thru Friday except ERCOT Holidays
 HE 1400 through 1600, Monday thru Friday except ERCOT Holidays
 HE 1700 through 2000, Monday thru Friday except ERCOT Holidays
 All other hours



Reliability Services – May 2015

Reliability Unit Commitment (RUC)	\$ in Millions
RUC Make-Whole Payments	(\$0.24)
RUC Clawback Charges	\$0.00
RUC Commitment Settlement	(\$0.24)
RUC Capacity Short Charges	\$0.24
RUC Make-Whole Uplift	\$0.00
RUC Commitment Cost Allocation	\$0.24
RUC Decommitment Payments	\$0.00



RUC Make-Whole Payments were \$0.24M in May 2015.
RUC Clawback Charges were \$0.00M.

There was \$0.00M allocated directly to load in May 2015,
compared to:

- \$0.00M in April 2015
- \$0.01M credit in May 2014

Capacity Services – May 2015

Capacity Services	\$ in Millions
Regulation Up Service	\$2.83
Regulation Down Service	\$2.44
Responsive Reserve Service	\$15.97
Non-Spinning Reserve Service	\$4.86
Black Start Service	\$0.63
Voltage Services - Reactive Power	\$0.00
Voltage Services - Lost Opportunity	\$0.00
Total Charges	\$26.73

Capacity Services costs decreased from last month and from May 2014.

May 2015 cost was \$26.73M, compared to:

- A charge of \$32.51M in April 2015
- A charge of \$32.40M in May 2014

Energy Settlement – May 2015

Day-Ahead Market Energy Settlement	\$ in Millions
Energy Purchases	\$341.52
Point to Point Obligation Purchases	\$19.02
RMR Day-Ahead Revenue	\$0.00
Energy Sales	(\$339.96)
Day-Ahead Congestion Rent	\$20.58
Day-Ahead Market Make-Whole Payments	(\$0.14)

Day-Ahead Market and Real-Time Market energy settlement activity increased from last month and decreased from May 2014.

Real-Time Market Energy Settlement	\$ in Millions
Energy Imbalance at a Resource Node	(\$482.46)
Energy Imbalance at a Load Zone	\$707.94
Energy Imbalance at a Hub	(\$173.78)
Real Time Congestion from Self Schedules	\$1.10
Block Load Transfers and DC Ties	(\$2.55)
Impact to Revenue Neutrality	\$50.25
Emergency Energy Payments	(\$0.06)
Base Point Deviation Charges	\$0.24
Real-Time Metered Generation (MWh in millions)	27.87

Congestion Revenue Rights (CRR) – May 2015

	\$ in Millions
Annual Auction	(\$25.87)
Monthly Auction	(\$8.61)
Total Auction Revenue	(\$34.48)
Day-Ahead CRR Settlement	(\$21.92)
Day-Ahead CRR Short-Charges	\$2.76
Day-Ahead CRR Short-Charges Refunded	(\$2.76)
Real-Time CRR Settlement	\$0.00
Real-Time CRR Short-Charges	\$0.00
Real-Time CRR Short-Charges Refunded	\$0.00
Total CRR Funding	(\$21.92)
Day-Ahead Point to Point Obligations Settlement	\$19.02
Real-Time Point to Point Obligation Settlement	(\$52.72)
Net Point to Point Obligation Settlement	(\$33.70)

Congestion Revenue Rights settlement payments were not fully funded and excess funds required to pay CRR Account Holders was withdrawn from the CRR Balancing Account Fund.

Point to Point Obligations settled with a net credit of \$33.70M compared to a net charge of \$6.98M last month.

CRR Balancing Account Fund – May 2015

CRR Balancing Account Fund	\$ in Millions
Beginning Balance for the Month	\$7.99
CRR Balancing Account Credit Total	\$1.42
CRR PTP Option Award Charges	\$0.05
Day-Ahead CRR Short-Charges Refunded	(\$2.76)
Total Fund Amount	\$6.70

ERCOT implemented the rolling CRR Balancing Account Fund beginning with Operating Month December 2014. The month of May 2015 closed with a Day-Ahead CRR shortfall of \$1,295,855 which was withdrawn from the Fund.

As of May 2015, the amount available in the CRR Balancing Account Fund is \$6,692,320.

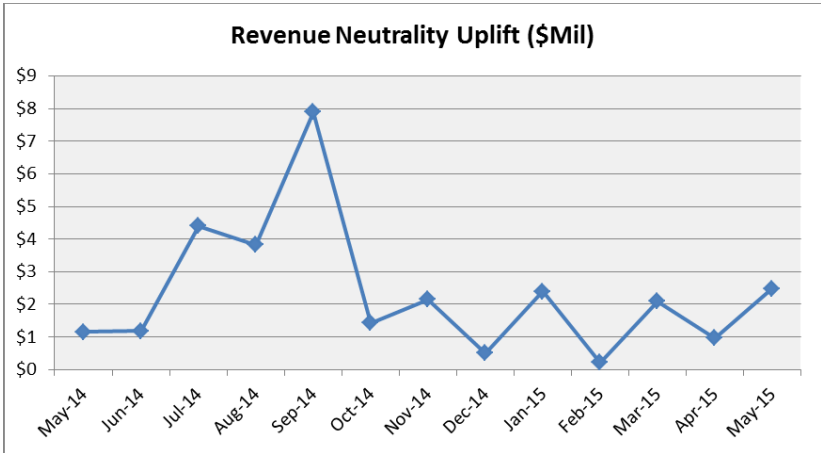
Revenue Neutrality – May 2015

Revenue Neutrality Settlement	\$ in Millions
Real-Time Point to Point Obligation Settlement	(\$52.72)
Real-Time Point to Point Options and Options with Refund Settlement	\$0.00
Real-Time Energy Imbalance Settlement	\$51.70
Real-Time Congestion from Self-Schedules Settlement	\$1.10
DC Tie & Block Load Transfer Settlement	(\$2.55)
Charge to Load	\$2.47

Revenue Neutrality charges to load increased compared to last month and compared to May 2014.

May 2015 was a charge of \$2.47M, compared to:

- \$0.97M charge in April 2015
- \$1.16M charge in May 2014



Real Time Ancillary Service Imbalance (ORDC) – May 2015

Real Time Ancillary Service Imbalance	\$ in Thousands
Real-Time AS Imbalance Payment Amount	(\$200.12)
Load Allocated AS Imbalance Revenue Neutrality Amount	\$200.12
Total Charges	\$200.12

Real-Time Ancillary Service Imbalance Settlements decreased from April 2015 to May 2015. Total payments for the month of May 2015 were \$200,123 compared to a payment of \$339,658 in April 2015.

9 of the 31 days in May had settlement dollars equal to \$0 for the day.

All days were settled as a net credit to QSEs representing generation and as a charge to QSEs representing load.

The highest settlement occurred on May 1st. The total Real Time Ancillary Service Imbalance payments on that day were \$43,389.

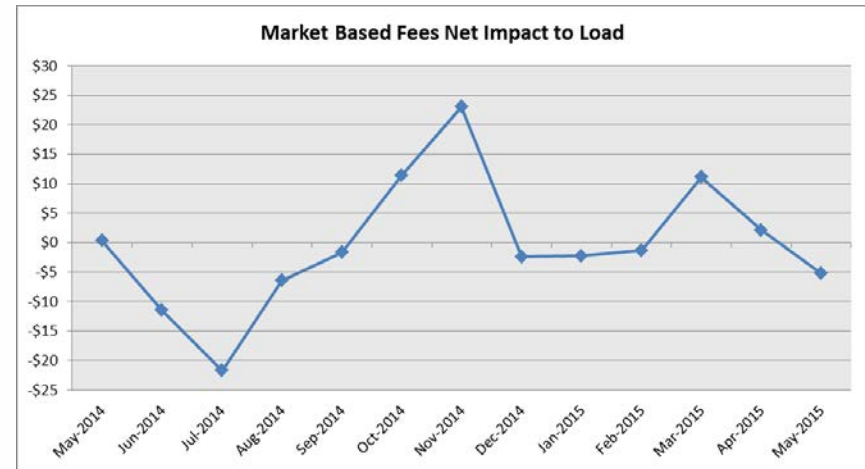
Net Allocation to Load – May 2015

Market-Based Allocation	\$ in Millions
CRR Auction Revenue Disbursement Settlement	(\$34.48)
Balancing Account Proceeds Settlement	\$0.00
Net Reliability Unit Commitment Settlement	\$0.00
Ancillary Services Settlement	\$26.73
Reliability Must Run Settlement (incl. RMR for Capacity)	\$0.00
Real-Time Revenue Neutrality Settlement	\$2.47
Emergency Energy Settlement	\$0.06
Base Point Deviation Settlement	(\$0.24)
ORDC Settlement	\$0.20
Total	(\$5.26)
Fee Allocation	
ERCOT Administrative Fee Settlement	\$13.01
Net Allocated to Load	\$7.75

The charge for the net allocation to Load decreased from last month and from May of 2014.

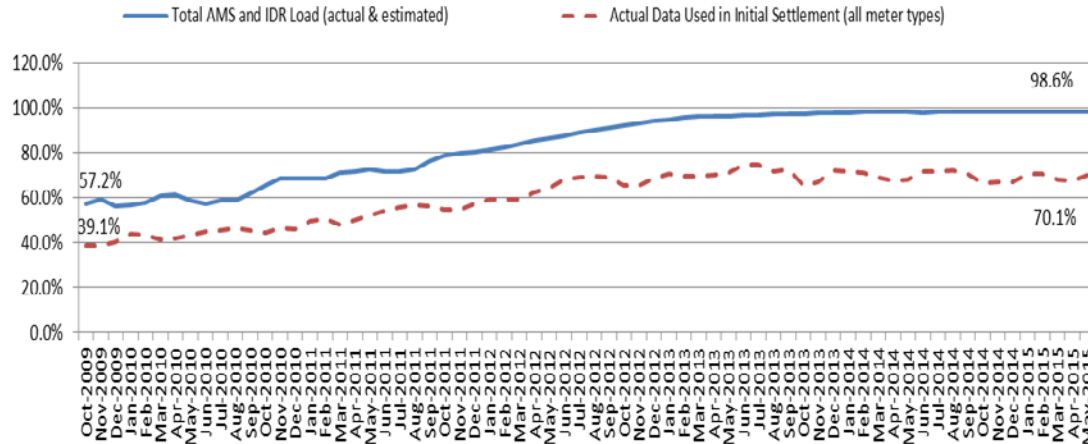
May 2015 was a charge of \$7.75M, compared to:

- A charge of \$13.57M in April 2015
- A charge of \$13.13M in May 2014



Advanced Meter Settlement Impacts – May 2015

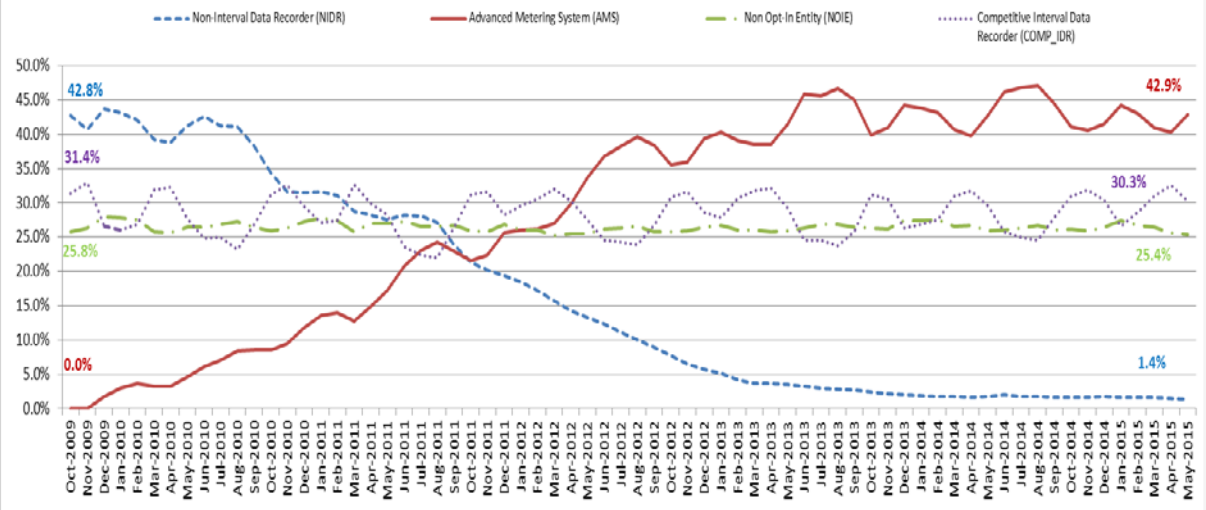
Percent Actual/Percent Interval Data Recorder (IDR)



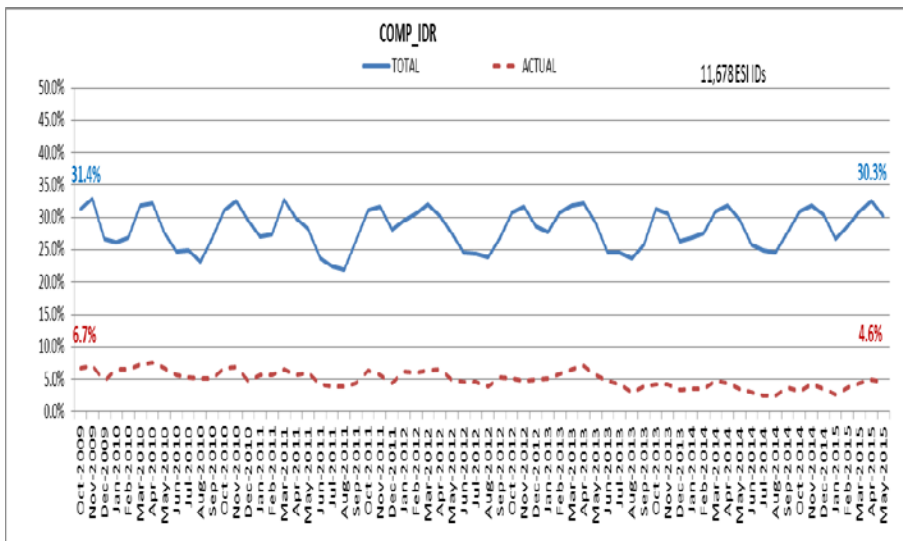
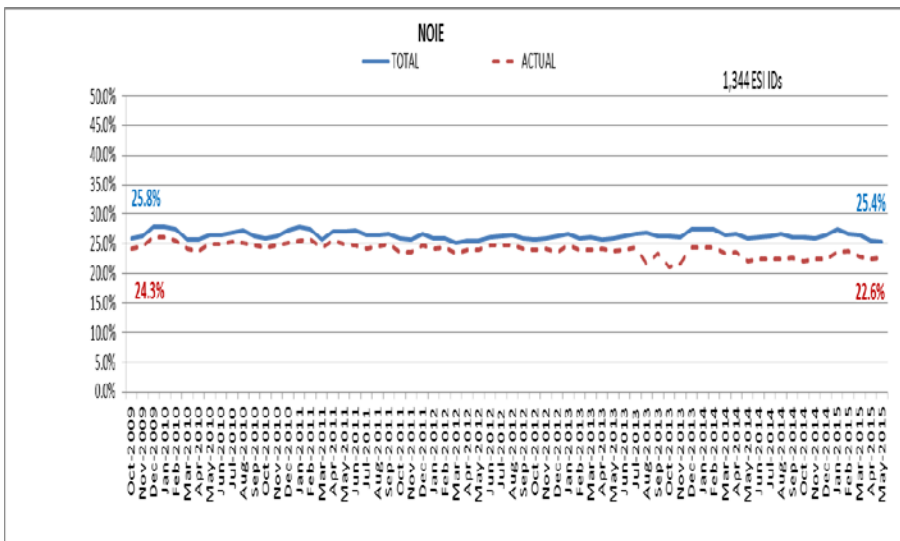
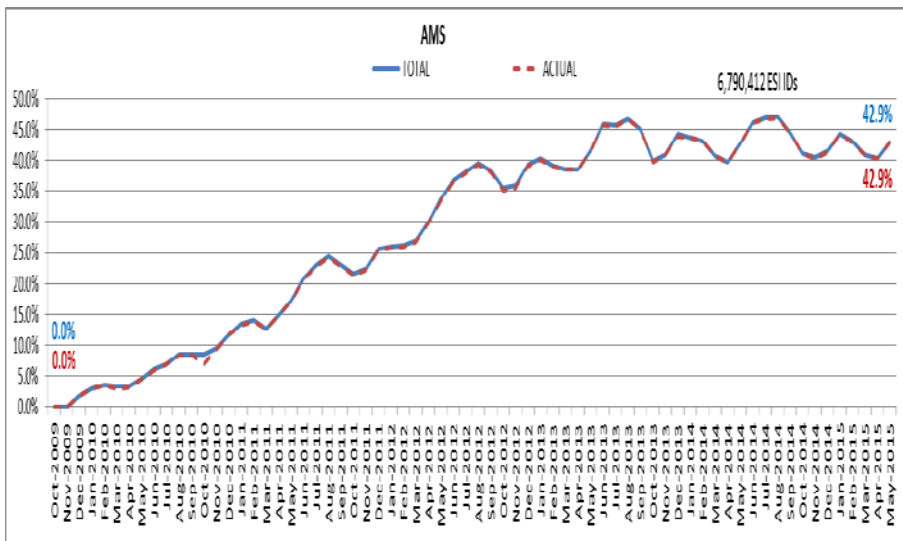
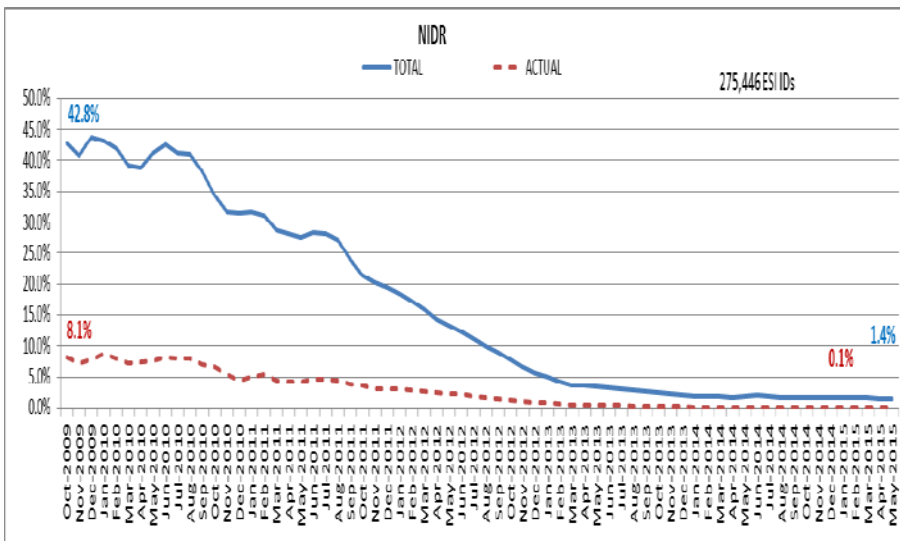
May 2015: At month end, settling 6.7M ESIDs using Advanced Meter data.

May 2015: 98.6% of the load in ERCOT is settled with 15-min interval data (AMS, Competitive IDR, and NOIE IDR).

Percent of Load by Meter Type



ERCOT Wide Load Volumes by Meter Type – INITIAL Settlement – May 2015

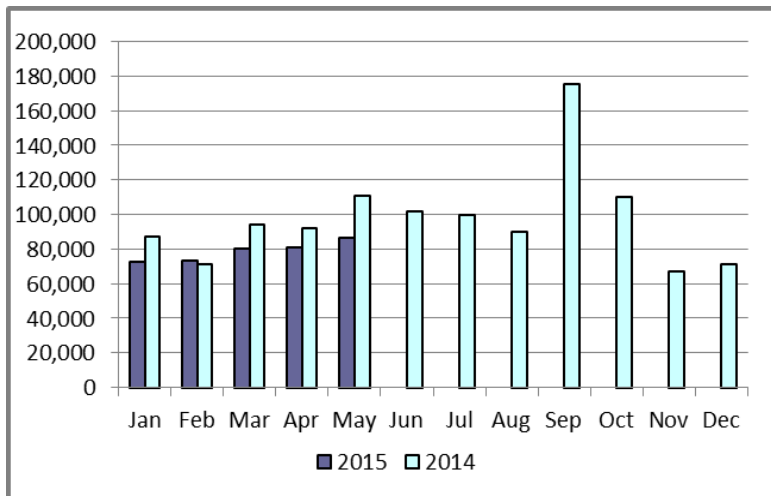


Retail Transaction Volumes – Summary – May 2015

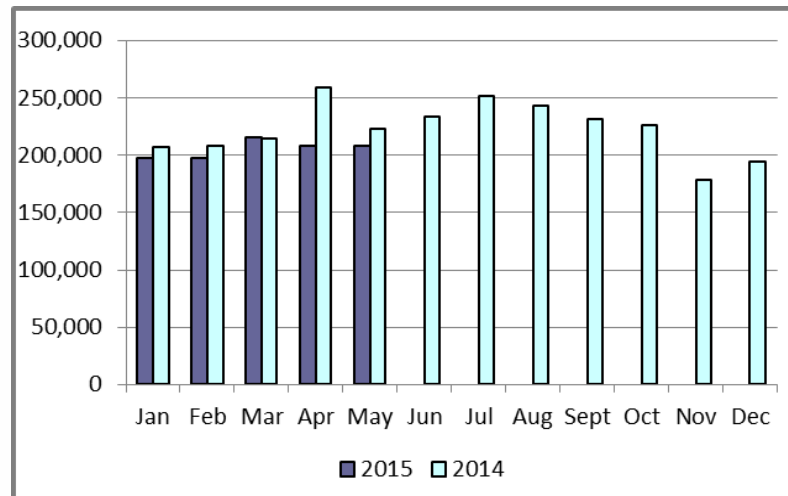
Transaction Type	Year-To-Date		Transactions Received	
	May 2015	May 2014	May 2015	May 2014
Switches	393,760	455,030	86,229	111,077
Acquisition	0	0	0	0
Move - Ins	1,027,838	1,111,793	208,166	223,201
Move - Outs	524,906	538,030	114,675	119,107
Continuous Service Agreements (CSA)	204,014	291,493	39,384	65,032
Mass Transitions	0	4,975	0	4,975
Total	2,150,518	2,401,321	448,454	523,392

Retail Transaction Volumes – Summary – May 2015

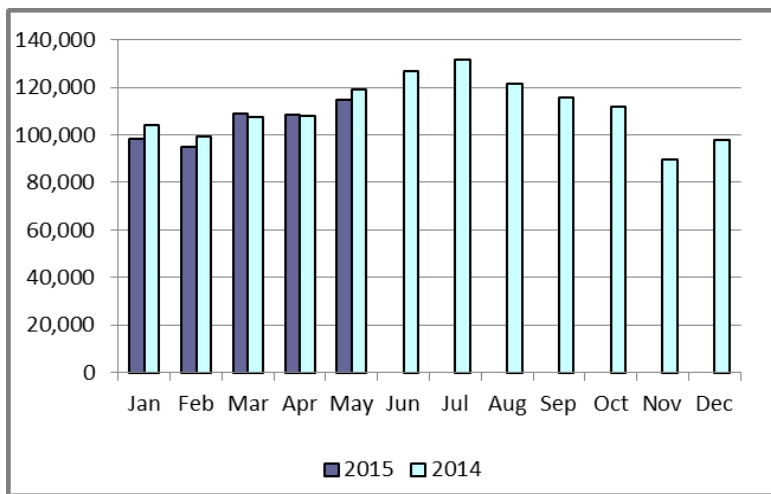
Switches/Acquisitions



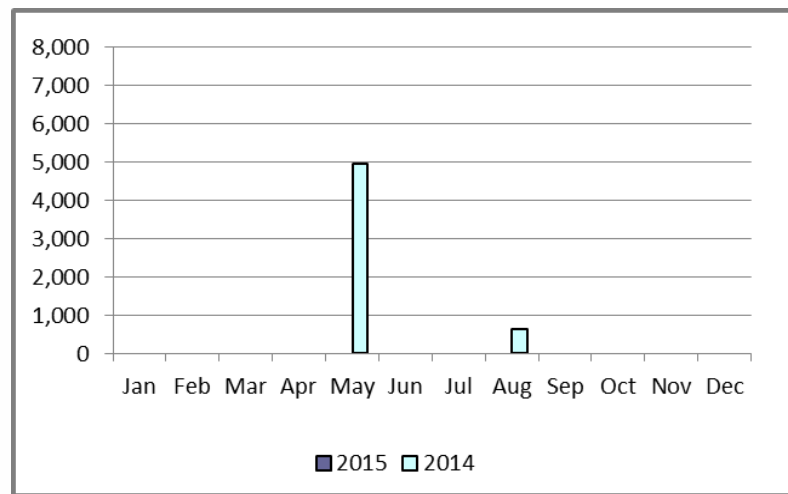
Move-Ins



Move-Outs

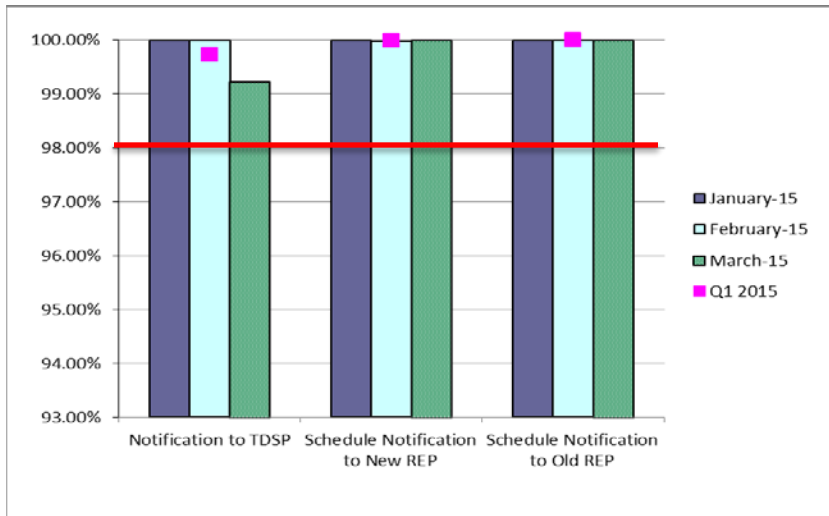


Mass Transition

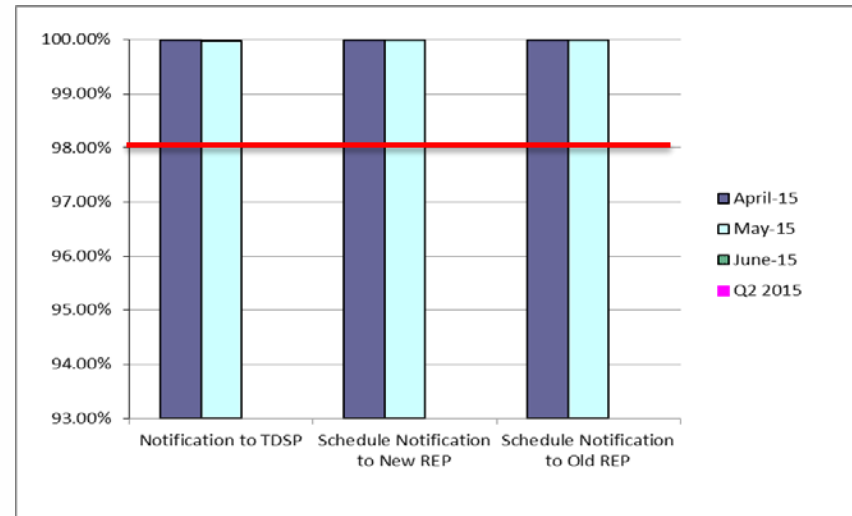


Retail Performance Measures – Switch – May 2015

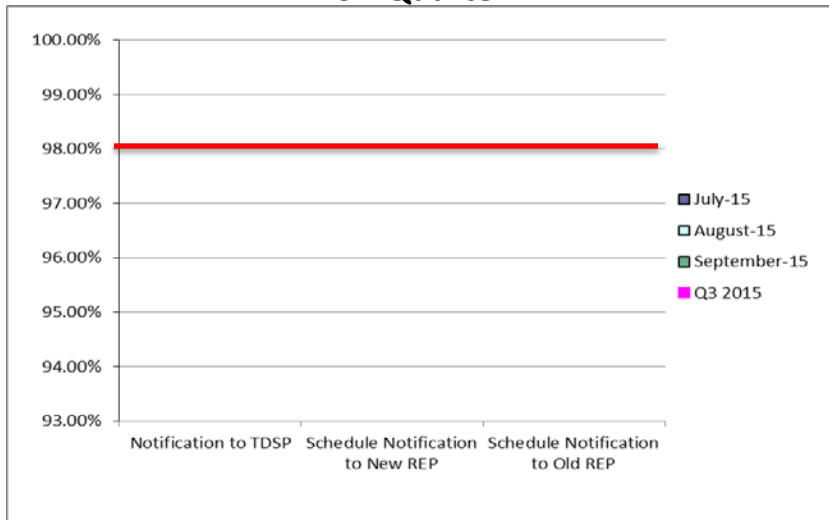
1st Quarter



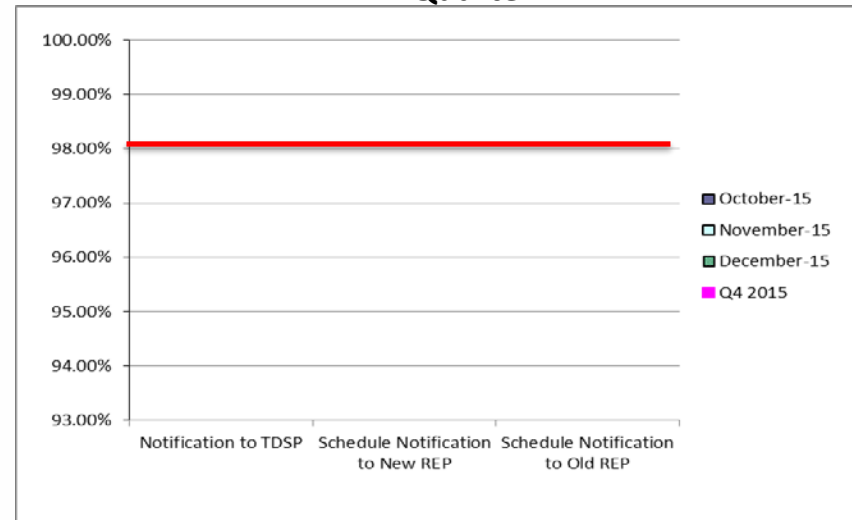
2nd Quarter



3rd Quarter

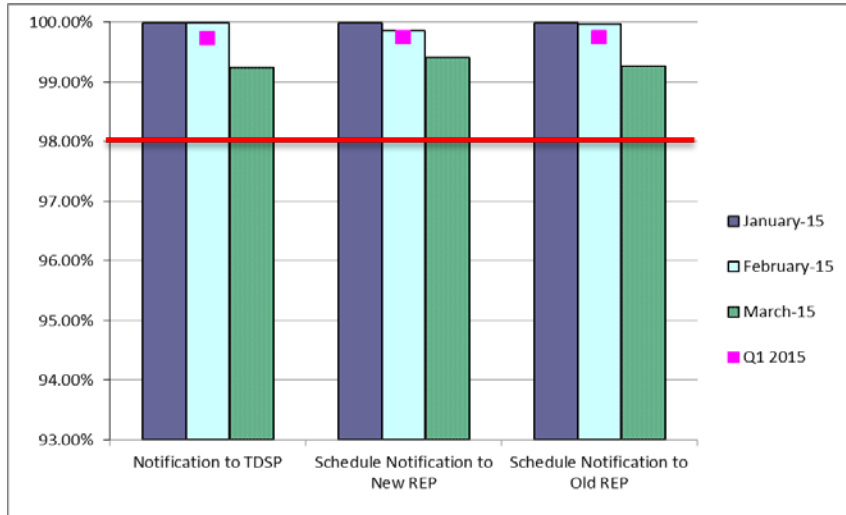


4th Quarter

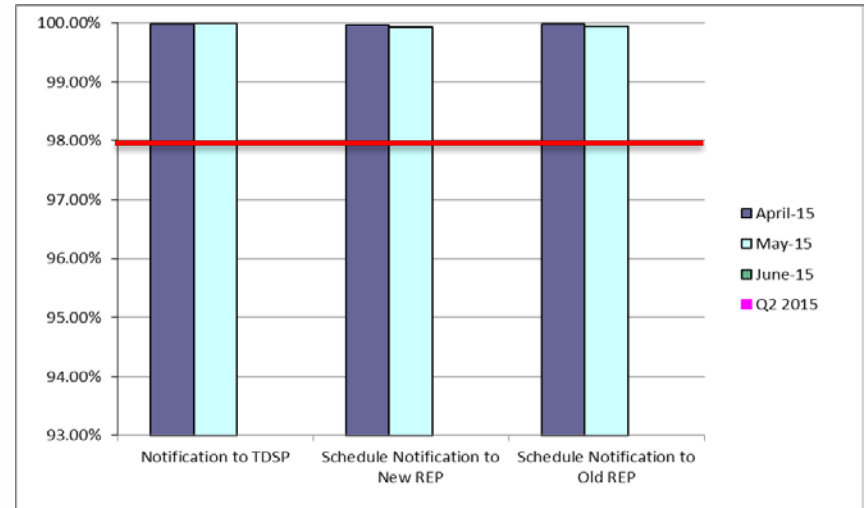


Retail Performance Measures (Same Day Move-In) – May 2015

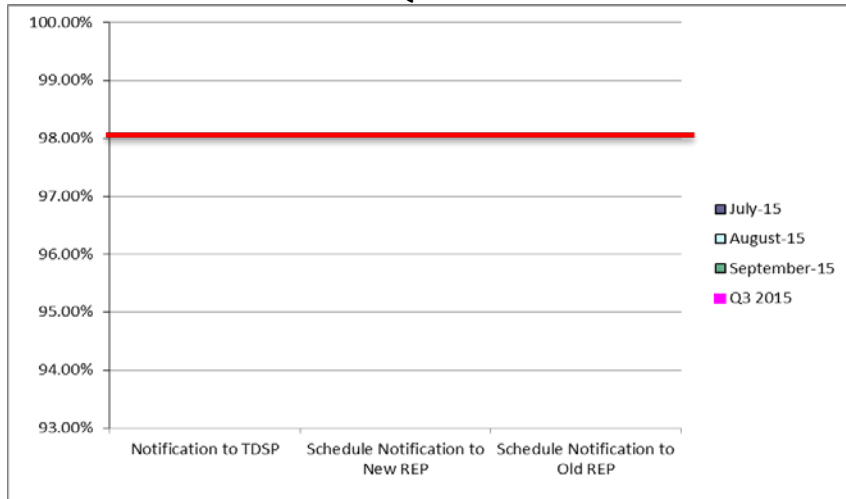
1st Quarter



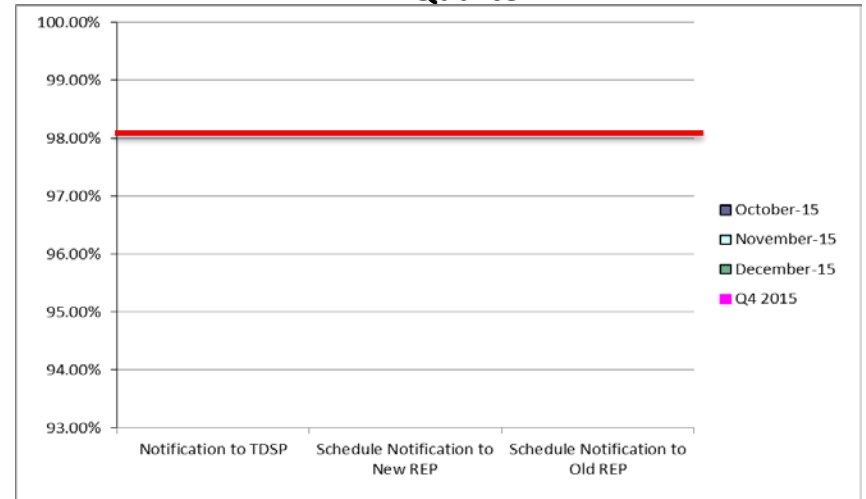
2nd Quarter



3rd Quarter

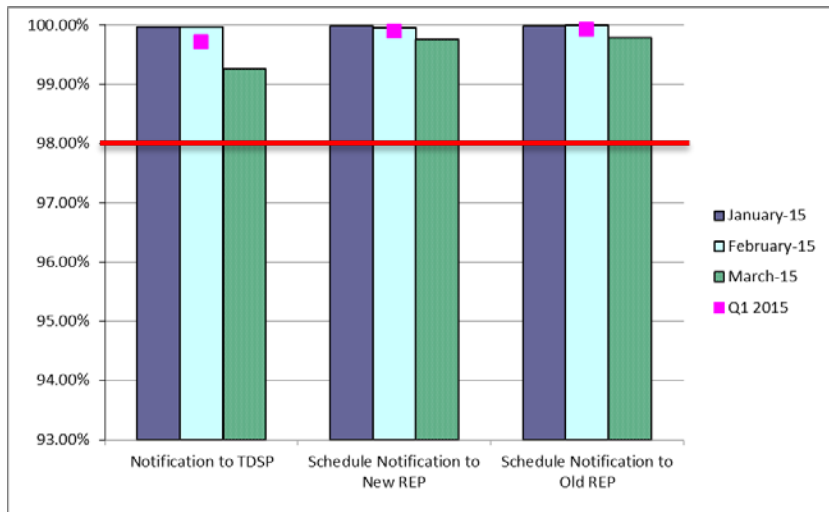


4th Quarter

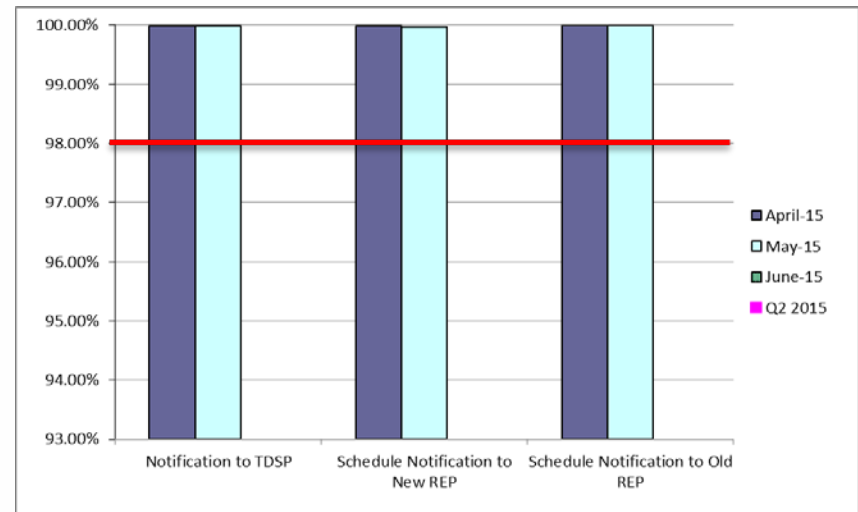


Retail Performance Measures (Standard Move-In) – May 2015

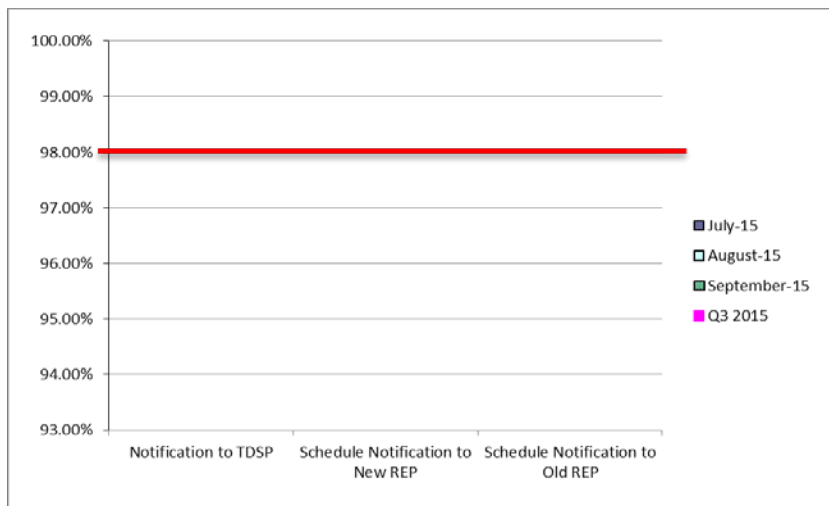
1st Quarter



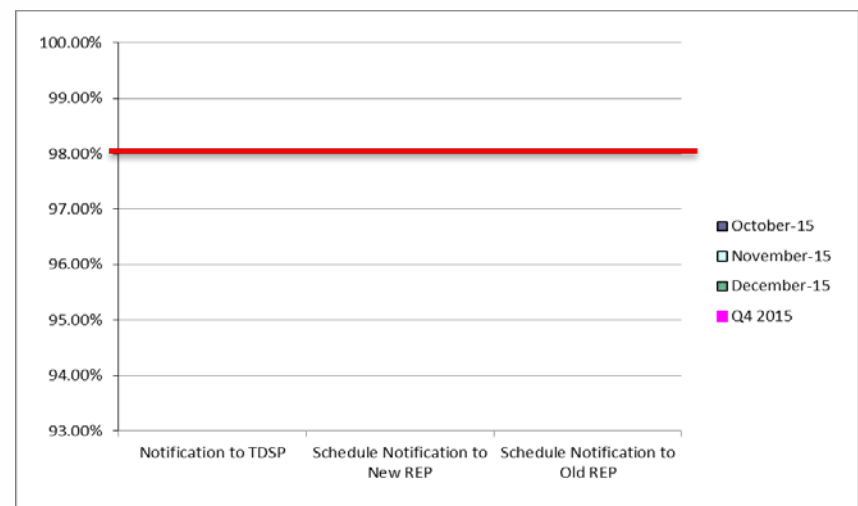
2nd Quarter



3rd Quarter



4th Quarter



Projects Report

ERCOT Portfolio Stoplight Report – May 2015

		2015 Project Funding	\$ 21,650,000
Impact Metric Tolerances		2015 Portfolio Spending Estimate	
Unfavorable variances are represented as negative numbers within the report. - Green = No more than 4.9% unfavorable variance - Yellow = Unfavorable variance between 4.9% and 9.9% - Red = Unfavorable variance more than 9.9%	Projects In Flight/On Hold (Count = 56)	\$ 24,496,995	
	Projects Not Yet Started (Count = 26)	\$ 1,913,232	
	Projects Completed (Count = 11)	\$ 278,623	
	Spending Reductions Required to Maintain Capital Budget	\$ (5,038,850)	
	TOTAL	\$ 21,650,000	

Project Number	Projects in Initiation Phase (Count = 5)
172-01	Physical Security Project #2
173-01	Retail Market Testing Website
TBD	Infoblox Hardware Refresh
NPRR573	Alignment of PRC Calculation
NPRR698	Clarifications to NPRR595, RRS Load Resource Treatment In ORDC

Project Number	Projects in Planning Phase (Count = 12)	Baseline Phase Start	Baseline Phase Finish	Scheduled Go-Live Date	Scheduled Phase Finish	Schedule Impact		Budget Impact	
106-01	MP Online Data Entry - Ph 1	10/9/2013	3/5/2014	TBD	5/13/2015	4	-295%		0%
141-01	Production Virtualization	11/6/2014	3/4/2015	TBD	5/29/2015	1	-72%		0%
158-01	Move iTron LF Application to High Availability Environment	1/14/2015	6/19/2015	TBD	6/19/2015		0%		0%
161-01	NPRRs 588 and 615	2/25/2015	7/15/2015	TBD	7/15/2015		0%		3%
163-01	Cyber Security Project #10	3/4/2015	7/28/2015	TBD	7/28/2015		0%		-4%
164-01	Browser Compatibility Assessment	2/25/2015	4/29/2015	TBD	6/12/2015	1	-69%		9%
168-01	Configuration Management System Requirements for CIP v5 Readiness	3/12/2015	6/17/2015	TBD	6/12/2015		5%		3%
169-01	Short Circuit Ratio Functionality	4/6/2015	6/17/2015	TBD	6/30/2015	1	-18%		8%
170-01	Enterprise Content Alignment Program	4/8/2015	8/5/2015	TBD	8/5/2015		0%		0%
171-01	CIP v5 Readiness Project	3/19/2015	7/13/2015	TBD	7/17/2015		-3%		0%
NPRR588	Clarifications for PV Generation Resources	2/25/2015	7/15/2015	TBD	7/15/2015		0%		See #161-01
NPRR615	PVGR Forecasting	2/25/2015	7/15/2015	TBD	7/15/2015		0%		See #161-01



ERCOT Portfolio Stoplight Report – May 2015

Project Number	Projects in Execution Phase (Count = 27)	Baseline Phase Start	Baseline Go-Live Target	Scheduled Go-Live Date	Scheduled Phase Finish	Schedule Impact		Budget Impact	
052-01	EMS Upgrade	9/24/2014	5/25/2016	5/25/2016	10/31/2016		0%		3%
065-01	NMMS Upgrade	12/17/2014	5/27/2016	5/30/2016	7/12/2016		0%		6%
089-01	Information Technology Change Management	10/29/2014	5/1/2015	6/30/2015	6/30/2015	2	-32%	2	-44%
116-01	Collage Replacement	2/6/2014	9/22/2014	7/8/2015	7/8/2015	4	-126%	2	-49%
120-01	IT Production Hardening	5/21/2015	4/1/2016	3/25/2016	4/25/2016		2%		1%
127-01	SQL Server 2012 Upgrade / Cluster Consolidation	12/18/2014	7/17/2015	7/17/2015	9/9/2015		0%		7%
134-01	Privileged Account Management	4/1/2015	9/30/2015	9/30/2015	10/30/2015		0%		2%
143-01	OSI Pi Visualization Enhancements	1/16/2015	6/19/2015	8/28/2015	8/30/2015	1	-45%		44%
144-01	OC-48 Replacement with DWDM	2/4/2015	8/25/2015	8/25/2015	9/29/2015		0%		0%
149-01	Market System Enhancements 2015	1/15/2015	6/28/2015	6/28/2015	7/31/2015		0%		13%
154-01	2014 CMM NPRRs and SCRs	1/29/2015	6/13/2015	6/13/2015	7/17/2015		0%	1	-9%
155-01	Replace N2N System	2/5/2015	5/14/2015	8/26/2015	10/2/2015	2	-106%	2	-13%
156-01	Symposium Call Center Replacement	2/5/2015	5/19/2015	8/31/2015	10/5/2015	2	-100%	2	-35%
165-00	Capital Efficiencies and Enhancements - 2015	1/1/2015	12/31/2015	12/31/2015	12/31/2015		0%		-1%
NPRR543	Message for Confirmed E-Tags	3/18/2015	6/23/2015	6/23/2015	7/27/2015		0%		1%
NPRR553	Monthly BLT Payment and Charge for Presidio Exception	4/9/2015	10/25/2015	10/25/2015	10/25/2015		0%		
NPRR559	Revisions to MCE Calculation	1/29/2015	6/13/2015	6/13/2015	7/15/2015		0%	NA	See #154-01
NPRR597	Utilize Initial Estimated Liability (IEL) Only During Initial Market Activity	1/29/2015	6/13/2015	6/13/2015	7/15/2015		0%	NA	See #154-01
NPRR598	Clarify Inputs to PRC and ORDC	1/15/2015	6/28/2015	6/28/2015	7/31/2015		0%	NA	See #149-01
NPRR601	Inclusion of Incremental Exposure in Mass Transitions to Counter-Parties that are Registered as QSEs and LSEs and Provide POLR Service	1/29/2015	6/13/2015	6/13/2015	7/15/2015		0%	NA	See #154-01
NPRR626	Reliability Deployment Price Adder	1/15/2015	6/28/2015	6/28/2015	7/31/2015		0%	NA	See #149-01
NPRR639	Correction to Minimum Current Exposure	1/29/2015	6/13/2015	6/13/2015	7/15/2015		0%	NA	See #154-01
NPRR645	Real-Time On-Line Capacity Revisions	1/15/2015	6/28/2015	6/28/2015	7/31/2015		0%	NA	See #149-01
NPRR665	As-Built Clarification of Reliability Deployment Price Adder	1/15/2015	6/28/2015	6/28/2015	7/31/2015		0%	NA	See #149-01
OBD	Setting the Shadow Price Caps and Power Balance Penalties in Security-Constrained Economic Dispatch	1/15/2015	6/28/2015	6/28/2015	7/31/2015		0%	NA	See #149-01
SCR771	ERCOT System Change Allowing Independent Master QSE to Represent Split Generation Resources	4/23/2015	8/14/2015	8/14/2015	8/14/2015		0%	NA	See #165-00
SCR775	Posting Results of Real-Time Data in a Display Format	3/31/2015	6/22/2015	6/22/2015	7/21/2015		0%		8%



ERCOT Portfolio Stoplight Report – May 2015

Project Number	Projects in Stabilization (Count = 8)	Baseline Execution Phase Start	Baseline Go-Live Target	Actual Go-Live Date	Scheduled Execution Phase Finish	Schedule Impact		Budget Impact	
NPRR467	Balancing Account Resettlement Due to DAM Resettlement	7/1/2014	12/6/2014	12/6/2014	6/12/2015		0%	NA	See #10052
NPRR580	Establishment of a Rolling CRR Balancing Account Fund	7/1/2014	12/6/2014	12/6/2014	6/12/2015		0%	NA	See #10052
SCR778	Credit Exposure Calculations for NOIE Options Linked to RTM PTP Obligations	1/29/2015	3/28/2015	3/28/2015	7/15/2015		0%	NA	See #154-01
SCR779	Increase to the CRR Auction Transaction Limit	9/29/2014	6/28/2015	5/27/2015	6/24/2015		11%	2	-8%
10052_01	Settlement System Upgrade	1/25/2012	12/23/2014	12/6/2014	6/12/2015		1%		-1%
097-01	ABB MMS OS Technology Refresh	8/15/2014	3/26/2015	3/26/2015	5/8/2015		0%		-1%
122-01	Infoblox DNS/DHCP	5/21/2014	11/5/2014	11/20/2014	3/11/2015	1	-8%		8%
130-01	Electronic Crisis Communications Enhancements	6/19/2014	12/12/2014	2/16/2015	6/12/2015	1	-37%	2	-5%
Project Number	Projects On Hold (Count = 4)	Forecast Start Date	Baseline Phase Finish	Scheduled Go-Live Date	Scheduled Phase Finish	Schedule Impact		Budget Impact	
SCR777	Bilateral CRR Interface Enhancement	8/20/2014	11/28/2014	TBD	TBD	3		3	
NPRR327	State Estimator Data Redaction Methodology	12/5/2012	2/12/2013	TBD	TBD	3		3	
129-01	Access and Roles Management	7/1/2014	10/1/2014	TBD	TBD	3		3	
166-01	Jboss Application Monitoring & Management (JAMM)	TBD	TBD	TBD	TBD	3		3	
Project Number	Projects Completed (Count =11)	Baseline Execution Phase Start	Baseline Go-Live Target	Actual Go-Live Date	Actual Execution Phase Finish	Schedule Status		Total Variance	
NPRR500	Posting of Generation that is Off but Available	1/7/2015	2/6/2015	2/6/2015	3/27/2015		0%		48%
NPRR586	Align Credit Lock for CRR Auctions with Transaction Submission Deadline	7/2/2014	9/26/2014	9/22/2014	10/28/2014		4%	2	-18%
SCR772	New Extract for Five Minute Interval Settlement Data	11/5/2014	2/13/2015	2/12/2015	3/30/2015		1%		19%
057-01	EPS Metering DB Redesign	4/17/2013	9/6/2013	12/11/2014	1/14/2015	2	-324%	2	-216%
083-01	Centralized Application Log Management	8/28/2013	5/7/2014	3/27/2014	2/4/2015		16%		9%
104-01	Disaster Recovery: S&B, RTL, MDT	10/9/2014	1/18/2015	1/18/2015	1/28/2015		0%		2%
115-01	Cyber Security Project #14	6/30/2014	1/15/2015	1/15/2015	3/6/2015		0%		13%
137-01	EIS Reporting and Control Systems Upgrade	8/13/2014	1/15/2015	1/13/2015	2/25/2015		1%		9%
142-01	Implementation of NERC BAL-TRE-001 Regional Standard	1/14/2015	2/16/2015	2/6/2015	3/6/2015		30%		46%
150-01	Backup Resiliency	12/17/2014	2/6/2015	2/6/2015	3/2/2015		0%		-3%
153-01	Infrastructure Performance Management	12/22/2014	1/22/2015	2/19/2015	3/2/2015	1	-90%		0%

Footnotes

- 1 - One or more phases took longer than expected, resulting in additional funding and/or time required
 - 2 - One or more phases required more labor than expected, resulting in additional funding and/or time required
 - 3 - Project placed on hold
 - 4 - Resource constraints resulted in delay to one or more phases
 - 5 - Project was on an urgent timeline to meet a pre-defined target implementation date. Compressed project planning required budget estimation before full requirements were known. Additional effort needed, resulting in additional funding
- NA - Metric not calculated because:
- it is reported at the parent project level, or
 - it is an administrative project



ERCOT Portfolio Stoplight Report – May 2015

Project Number	2015 Projects Not Yet Started (Count = 26)	Forecast Start Date
NPRR219	Resolution of Alignment Items A33, A92, A106, and A150 - TSPs Must Submit Outages for Resource Owned Equipment and Clarification of Changes in Status of Transmission Element Postings	Jun-2015
SCR783	Outage Scheduler Enhancements – Group 2, Usability and Filtering Enhancements	Jun-2015
NPRR210	Wind Forecasting Change to P50, Sync with PRR841	Jul-2015
NPRR256	Sync with PRR787, Add Non-Compliance Language to QSE Performance Standards	Jul-2015
NPRR419	Revise Real Time Energy Imbalance and RMR Adjustment Charge	Jul-2015
NPRR484	Revisions to Congestion Revenue Rights Credit Calculations and Payments - Phase 1b / 2	Jul-2015
NPRR495	Changes to Ancillary Services Capacity Monitor	Jul-2015
NPRR556	Resource Adequacy During Transmission Equipment Outage	Jul-2015
RMGRR126	Additional ERCOT Validations for Customer Billing Contact Information File	Jul-2015
TBD	Enterprise Resource Planning	Jul-2015
CIP	Compliance Project #1	Aug-2015
NPRR515	Day-Ahead Market Self-Commitment of Generation Resources	Aug-2015
NPRR617	Energy Offer Flexibility	Aug-2015
RRGRR003	Modifications to Improve Wind Forecasting	Aug-2015
TBD	Build Load Models for TSAT	Aug-2015
TBD	CRR UI Framework Upgrade	Aug-2015
TBD	Cyber Security Project #19	Aug-2015
TBD	N-1-x Tool	Aug-2015
TBD	Tools for Renewables Desk	Aug-2015
TBD	AV Upgrades to TCC1 Conference Rooms	Sep-2015
134-02	Privileged Account Management - SSAE16	Oct-2015
NOGRR084	Daily Grid Operations Summary Report	Oct-2015
TBD	CREZ Voltage Control and Coordination - Phase 2	Oct-2015
TBD	PMU Monitor	Oct-2015
TBD	Records Management and eDiscovery	Oct-2015
NPRR620	Collateral Requirements for Counter-Parties with No Load or Generation	Nov-2015

