



Outage Coordination Update

Shun Hsien (Fred) Huang
Operations Support

Technical Advisory Committee (TAC)
March 26, 2025

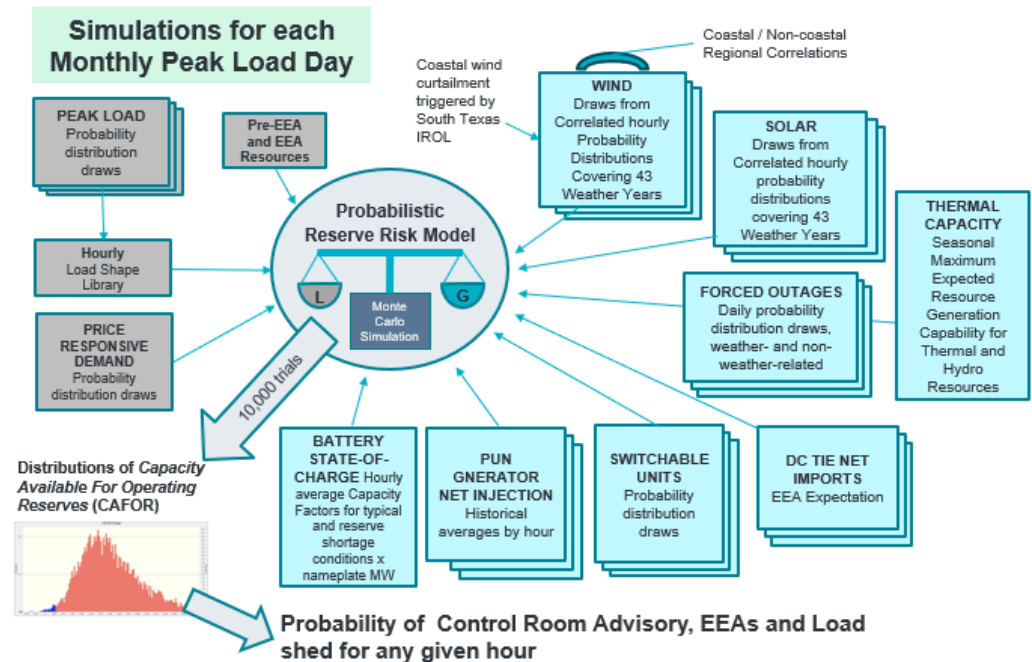
Outlines

- Maximum Daily Resource Planned Outage Capacity (MDRPOC) Methodology Status Update
- Potential Changes to Outage Coordination
- Next Steps

MDRPOC Methodology Review

- The existing MDRPOC methodology calculates the MDRPOC deterministically and cannot easily quantify the risk level associated with the MDRPOC.
- Similar to the Monthly Outlook for Resource Adequacy (MORA), ERCOT has explored the feasibility of using a probabilistic approach to calculate MDRPOC. The benefits of a risk-based MDRPOC calculation include but not limited to:

- ❑ quantification of the risk level for the selected MDRPOC
- ❑ quantification of the impact of risk for any adjustment of MDRPOC calculation, such as load forecast
- ❑ determination of MDRPOC based on desired/acceptable risk level



Tested Criteria

- The preliminary acceptable risk level to maintain sufficient available generation capacity is based on
 - 1) Accessing the risk level of existing MDRPOC
 - 2) Considering different risk levels per season per year
 - 3) Conducting an annual review to determine if the risk level and or outage coordination process needs to be adjusted to support the required Resource planned outages

Preliminary Observations

- The risk level will help to indicate the likelihood # of AANs that could be expected in a season.
 - For example, 3% for a spring season indicates ~3 AANs could be issued during that season
- Based on the preliminary risk assessment, existing MDRPOC could lead to more AANs in fall than in spring which generally aligns with the operational experience in recent years.
- Increased risk for the future years primarily due to limited new generation commitment and projected load growth.
 - Periodical update of MDRPOC to include new committed generation is expected to improve the risk

Potential Acceptable Risk Level Criteria

- One of the potential options for the acceptable risk level is the average risk level by year (excluding summer)
- The calculated risk for summer is not associated with the MDRPOC value. MDRPOC provides limited/zero planned outage capacity

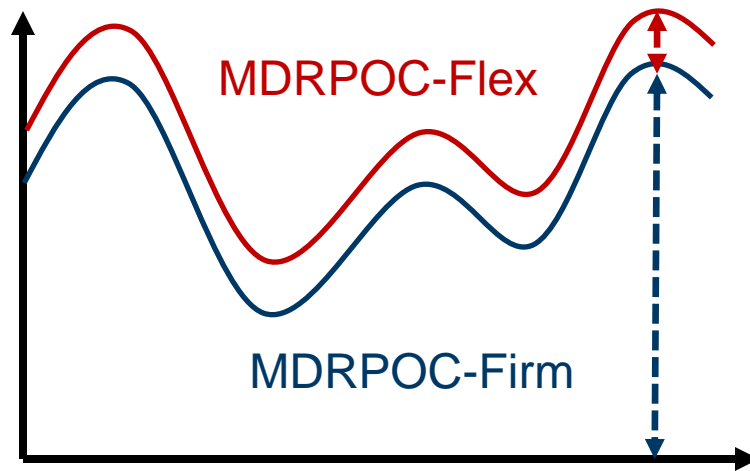
Season	Existing MDRPOC	Risk Based MDRPOC
Spring	A%	X%
Summer	B%	X%
Fall	C%	X%
Winter	D%	X%

X= average (A,C,D)

- Different acceptable risk level for each year and ERCOT will conduct annual review to determine if adjustment is needed

Proposed Changes to Outage Coordination

- Introduce Flexible MDRPROC to provide additional outage capacity for Resources that can return to service within 48 hours upon ERCOT's request in anticipation of a possible Emergency Condition.
 - This addition is to provide additional outage capacity to support Resource's Planned Outage requests while maintaining resource flexibility to support the grid reliability when needed



- MDRPOC-Firm is calculated to meet the acceptable risk level
- MDRPOC-Flex is the extra outage capacity for the Resources that can return to service

MDRPOC Exceedance Consideration - Concept

- Add new paragraph 3.1.6(8)

Notwithstanding any other provision in this Section, ERCOT may approve a requested Outage plan that would cause the aggregate MW of Resource Outages to exceed the Firm Maximum Daily Resource Planned Outage Capacity at any point during the duration of the proposed Resource Outage include but are not limited to:

- (a) The Equipment must be removed from service due to unavailable fuel supply such as gas pipeline outages ;
- (b) The Equipment must be removed from service to support the interconnection of new facility as described in the Public Utility Regulatory Act (PURA) § 35.005(d), adopted by the 88th Texas Legislature; and
- (c) The Equipment must be temporary removed from service to take actions to meet the state or federal regulatory environmental requirements that are otherwise will be permanently removed from service.

Next Step

- MDRPOC Methodology
 - March 26 TAC, status update and preliminary observation
 - April 23 TAC, redline MDRPOC methodology and preliminary results
 - Issue a Market Notice per Protocol 3.1.6.13 (3)